



**HISTORIC PRESERVATION BOARD**

**Chair: Kim Head**

**Co-Chair: Hannah Ammar**

**Jangi Borhi**

**Mary Frances Howard**

**Joan Foglia**

**Liz Andert**

**Frank Krens**

**Town Council Liaison: Tony Davit**

***Agenda***

***Agenda***

**November 4, 2024**

**5:00 PM**

**COMMUNITY CONFERENCE ROOM  
614 MAIN STREET, BUILDING 100  
WINDERMERE, FL 34786**

**PLEASE TURN OFF ALL CELL PHONES AND PAGERS**

PLEASE NOTE: IN ACCORDANCE WITH F.S. 286.26: Person with disabilities needing assistance to participate in any such proceedings should contact the Office of the Clerk at least 48 hours beforehand at (407) 876-2563.

Pursuant to Resolution No. 2005-12 adopted on December 13, 2005, the following Civility Code shall govern all proceedings before the Town of Windermere Historic Preservation Board:

1. All electronic devices, including cell phones and pagers, shall be either turned off or otherwise silenced.
2. Prolonged conversation shall be conducted outside Council meeting hall.
3. Whistling, heckling, gesturing, loud conversations, or other disruptive behavior is prohibited.
4. Only those individuals who have signed the speaker list and/or/who have been recognized by the Mayor (or Chair) may address comments to the Council.
5. Comments at public hearings shall be limited to the subject being considered by the Council
6. Comments at Open Forums shall be directed to Town issues.
7. All public comments shall avoid personal attacks and abusive language
8. No person attending a Historic Preservation Board meeting is to harass, annoy, or otherwise disturb any other person in the room.

Any member of the public whose behavior is disruptive and violates the Town of Windermere Civility Code is subject to removal from the Historic Preservation Board meeting by an officer and such other actions as may be appropriate. PLEASE NOTE: IN ACCORDANCE WITH F.S. 286.0105: Any person who desires to appeal any decision at this meeting will need a record of this proceeding. For this, such person may need to ensure that a verbatim record of such proceeding is made which includes the

## **AGENDA**

- 1. CALL TO ORDER**
- 2. OPEN FORUM / PUBLIC COMMENT (3-Minute Limit)**
- 3. MINUTES**
  - a. September 17, 2024 Historic Preservation Board Meeting Minutes (Attachment)**
- 4. OLD BUSINESS**
  - a. Inspection List: Report from Liz Andert**
  - b. Review Strategic Plan**
  - c. Immediate Maintenance**
  - d. Dress / Product Illustration Fundraiser**
  - e. Holiday Hoopla Contribution**
- 5. NEW BUSINESS**
  - a. Ventilation Team (Window Opening) / Volunteers and Schedule**
  - b. Easter Craft Party in the School House Grove**
  - c. Fundraiser Ideas**
  - d. Sculpture: Loan from John Nabers and Centennial Celebration (Attachments)**
  - e. Additional New Business**
- 6. LIAISON REPORTS**
- 7. ANNOUNCEMENTS**
- 8. ADJOURN**







Native Floridian W. Stanley "Sandy" Proctor established his initial reputation as a painter of the wildlife and landscape unique to his north Florida environment, selling his paintings through Sportsman's Edge in New York and Collector's Covey in Dallas. Sandy's work has won numerous distinctions and prestigious exhibition opportunities, including repeat invitations to the Leigh Yawkey Woodson International "Birds in Art" Exhibition, Easton Waterfowl

Festival, Southeastern Wildlife Exposition, and the Masters' Show in Ligonier. Further, as part of Leigh Yawkey Woodson traveling exhibitions, Sandy's work has been on display at the British Museum of Natural History, the Cleveland Museum of Natural History, the Smithsonian, and other museums of national and International recognition.

In the late 1980's, Sandy expanded his artistic interpretation of wildlife into the three dimensional medium of stone. His marble and alabaster pieces may be seen in both corporate and private collections throughout the country, including the Leigh Yawkey Woodson Museum in Wausau, Wisconsin and the Polk Museum of Art in Lakeland, Florida. Additionally, Sandy's alabaster sculpture of the endangered manatee was included in the 1993 Leigh Yawkey Woodson "Wildlife: The Artist's View" show and traveling exhibit.

Sandy now works almost exclusively in bronze. He recently completed commissions for two public libraries and a museum in Florida. His bronzes are located in the corporate headquarters of Barnett Banks, Inc. in Jacksonville and the regional medical center in Tallahassee. In April 1995, the Governor of Florida presented the President of the United States with a gift of Sandy's work entitled "Bandanna." In addition to gallery shows, Sandy returns annually to "Sculpture in the Park," in Loveland, Colorado and participates in other regional and national exhibitions.





*The Shell*  
Bronze  
Height 44"













*Doretha*

Bronze

L: 10" W: 10" H: 19"





Tyke  
9  
Bronze









*Magua*

Bronze

L: 20" W: 14" H: 28.5"

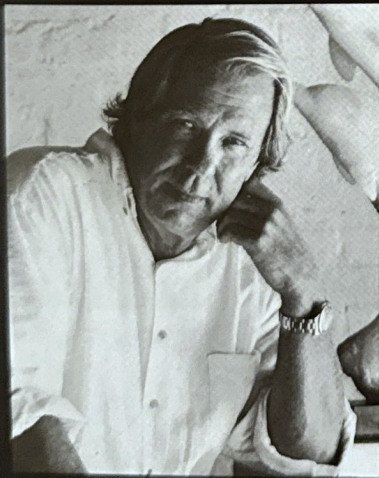


# W. STANLEY PROCTOR



CATALOG OF BRONZE SCULPTURES





W. STANLEY PROCTOR

Native Floridian W. Stanley "Sandy" Proctor has a national reputation as a professional sculptor of the highest caliber. Prior to concentrating in bronze sculpture, Sandy was an accomplished painter and stone carver whose works have been displayed in museums of national and international recognition.

In the past several years, Sandy has installed numerous public and private commissions of monumental bronzes. Most recently, he has completed commissions for The Boyds Collection in Pennsylvania; the Raymond James Financial Art Collection in Florida; the Florida Sheriffs Association; the Florida Highway Patrol; and the Florida Sheriffs Youth Ranch.

Other installations have included works at the Florida Governor's Mansion Children's Park; the National Jewish Center Hospital in Colorado; the Arts Foundation of Farmers Branch in Texas; the Living Desert Museum in California; Hackensack University Medical Center in New Jersey; the Leon County Courthouse; Fairhope High School in Alabama; the Florida Association of Broadcasters; two public libraries; and two public mall areas.





Sandy recently finished a larger-than-lifesize sculpture commemorating integration at Florida State University. Other significant pieces are located at the White House; the Polk Museum of Art in Florida; Tallahassee Memorial Hospital; University of South Alabama Women's and Children's Hospital; and Maymount Gardens in Virginia.

Sandy regularly participates in many art shows around the country, and he has been the Featured Master Sculptor at the Easton Waterfowl Festival in Maryland; the Southeastern Art Exposition in South Carolina; and the Plantation Wildlife Arts Festival in Georgia. His work is shown in many private galleries across the country, including Hilton Head, SC; Highlands, NC; Santa Fe, NM; Sedona, AZ; Palm Desert, CA; Park City, UT; and Jackson Hole, WY.

Sandy is equally comfortable modeling animals or people in any size. In addition to his many public commissions, Sandy continues to be sought after for private commissions and memorials. Many art collectors value Sandy's figurative sculptures as among the finest examples of lifesize sculpture available today.

#### FOLLOW THE LEADER

Lifesize Bronze

Edition of 12

H 7' L 21' W 5'





FLORIDA  
SHERIFFS  
YOUTH  
RANCH

Live Oak, Florida

BOYDS BEARS  
COLLECTION, LTD.

Gary Lowenthal, Founder  
Gettysburg, Pennsylvania



“TESS” GRAVESITE MEMORIAL FOR  
FLORIDA GOVERNOR LAWTON CHILES

FLORIDA HIGHWAY PATROL  
TROOPERS MEMORIAL

Tallahassee, Florida





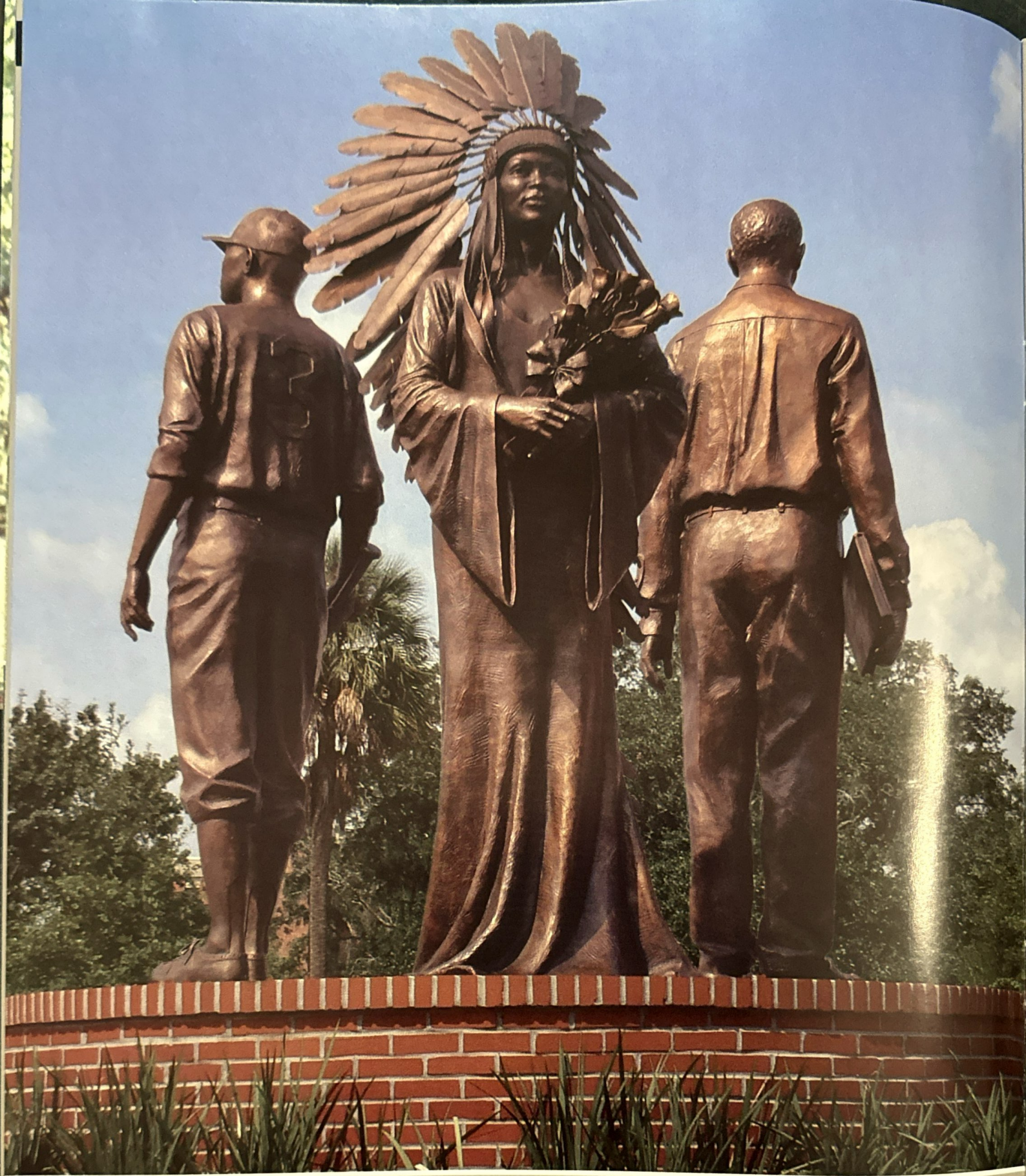
FLORIDA SHERIFFS FALLEN OFFICER MEMORIAL

Tallahassee, Florida



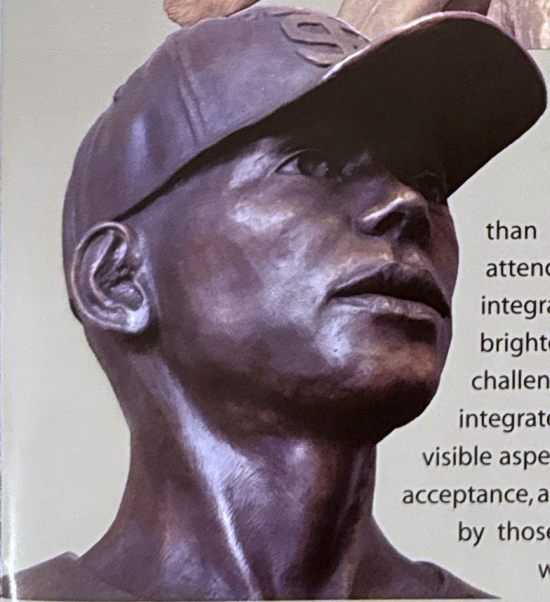
This was a tough one. I knew the sculpture required an emotional “charge,” but I wanted the project to express more. This memorial not only needed to be a positive statement about the men and women who have given their lives in the line of duty, but also offer a sanctuary of quiet serenity and reflection for the families of these fallen officers. To accomplish this goal, I worked very closely with the Florida Sheriffs Association to achieve their vision of a Fallen Officer Memorial. I am grateful to the Association members, their families and their contributions to Florida law enforcement.





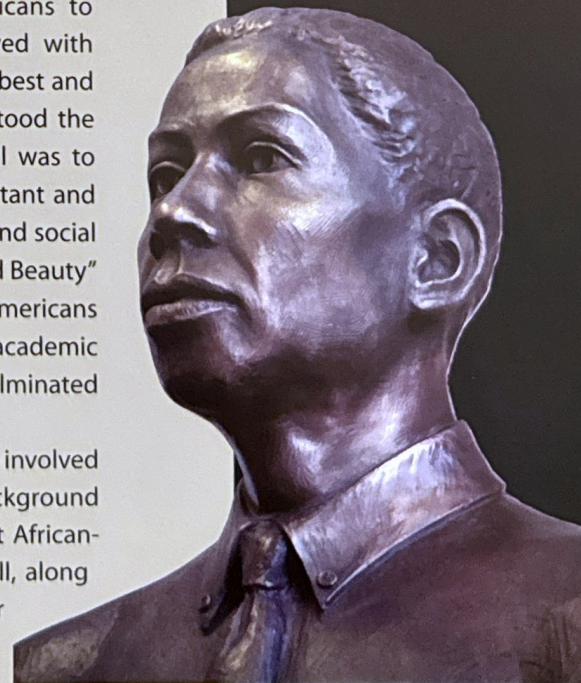
FLORIDA STATE UNIVERSITY INTEGRATION MEMORIAL  
"BOOKS, BATS AND BEAUTY"



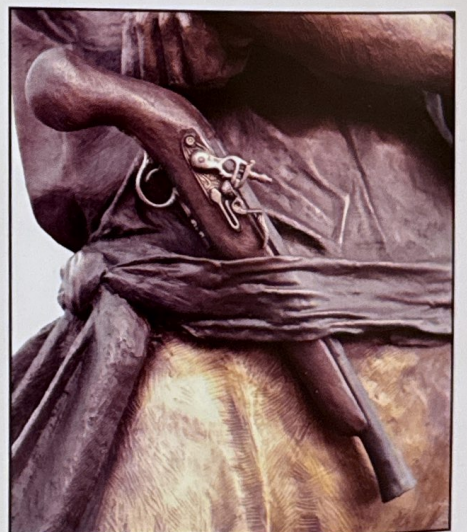
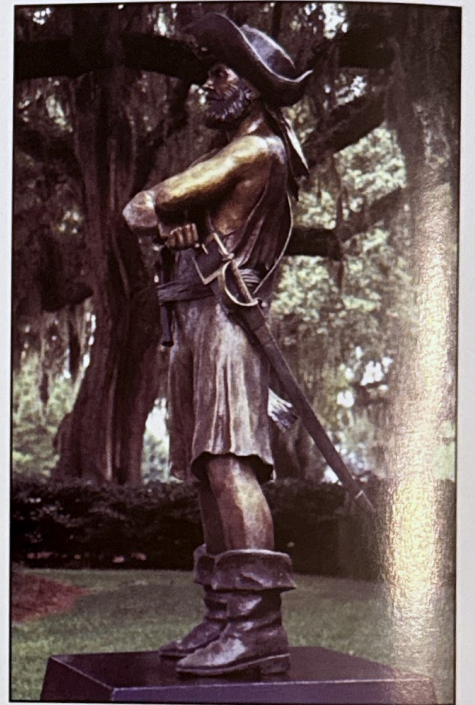
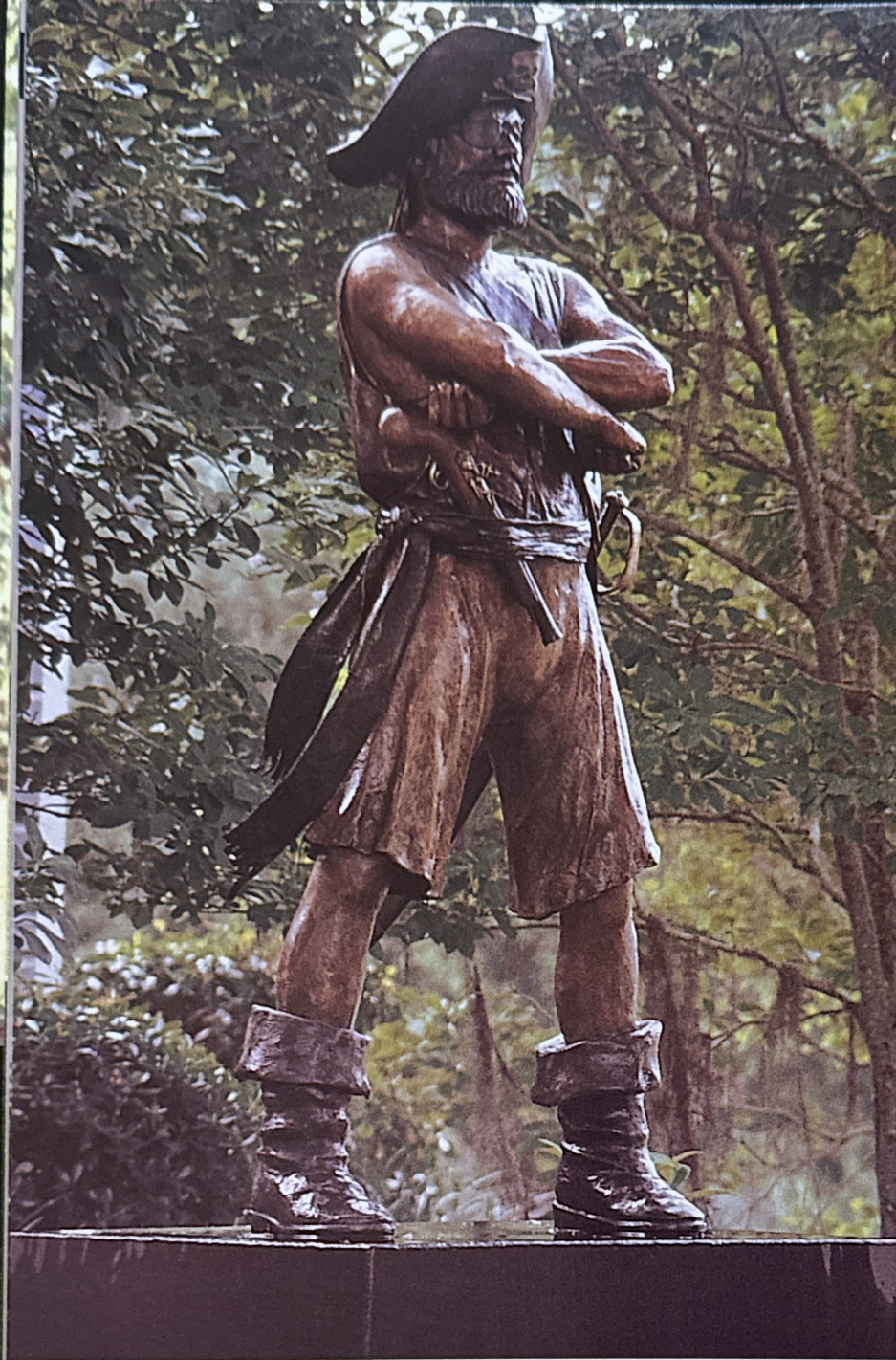


*I*ntegration was more socially complicated than the matter of admitting African-Americans to attend FSU. The black students first involved with integration of Florida State University were the best and brightest of their generation, and they understood the challenges they would face. Their unified goal was to integrate African-Americans into the most important and visible aspects of college life – academics, athletics, and social acceptance, a movement referred to as “Books, Bats, and Beauty” by those involved. During this time, African-Americans were successfully integrated into honor academic classes, the FSU baseball team, and culminated with the election of an African-American homecoming queen.

For this project, I began by inviting a wide selection of people involved in “Books, Bats, and Beauty” to a roundtable discussion for background information and ideas. This group included Doby Flowers – the first African-American homecoming queen, then-FSU President Stanley Marshall, along with several current FSU students and other community activists. Our roundtable discussion eventually transformed into this memorial.







## ANCHORS AWAY

Monumental Bronze

Edition of 10

H 8' L 4' W 3'

(20" maquette available)

I was inspired by my boyhood memories of reading the novel *Treasure Island*, which was accompanied by the dramatic sketches of N.C. Wyeth. My goal was to create an imposing figure that would command respect and convey a mysterious air of danger and adventure. Pure fun! I could play N.C. Wyeth and create whatever my imagination would allow. You don't get this kind of opportunity very often.





POPPIES: WORLD WAR II MEMORIAL

Dallas, Texas



*P*oppies was inspired by a close friend's moving painting of a retired World War II veteran. The elderly veteran is holding the traditional poppy flowers during a Memorial Day celebration. The American flag was added for the benefit of later generations who had no knowledge of the poppies' meaning.

I used my oldest living relative at the time, Julian Proctor, as my model. After the sculpture was completed, we hosted a large family reunion to honor Julian's life and accomplishments. One of my fondest memories is this gathering of my extended family to celebrate Julian and the completion of the sculpture.



## ENCHANTER

Monumental Bronze

Edition of 10

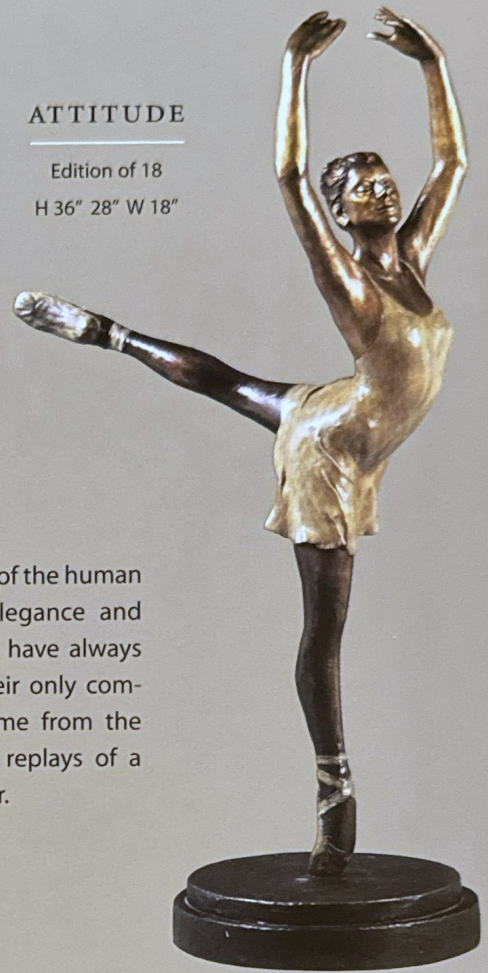
H 9' L 5' W 4'



## ATTITUDE

Edition of 18

H 36" L 28" W 18"



The beauty of the human form and the elegance and grace of dancers have always inspired me. Their only competition may come from the TV slow motion replays of a NFL wide receiver.

## ENCHANTER

Maquette

Edition of 18

H 36" L 18" W 18"







THE WAGON PULL

Lifesize commission by the Murphy Family



SUMMERTIME FUN

Lifesize commission by the Reed Family



SHARING SUNSHINE

Lifesize commission by the Roberts Family for  
the National Jewish Center Hospital  
Denver, Colorado





Part of the beauty of Sandy's figurative pieces is their uniqueness. His sculptures appear to be real individuals waiting to step out and introduce themselves. With "The Shell", Sandy shows us a small girl's quiet wonder at hearing ocean waves in a conch shell for the very first time.

THE SHELL

Edition of 30  
H 44"



SOMEDAY

Edition of 30  
H 44"





**CATCH OF THE DAY**

Edition of 18

H 8' L 4' W 8'



**ANYBODY HOME**

Edition of 20

H 22" L 20" W 36"

**FIRST MATE PONCE**

Edition of 20

H 8' L 4' W 6'







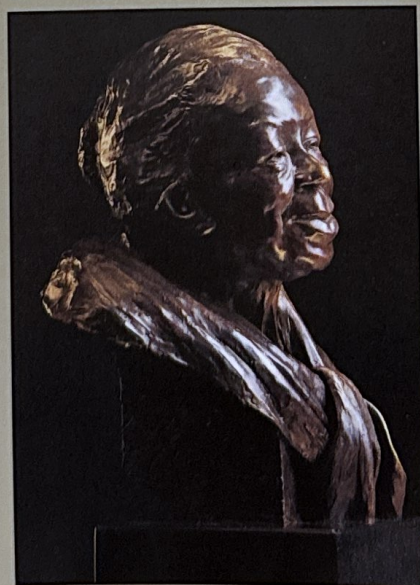
SUMMERTIME READ

Edition of ~~20~~ 24  
 H 36" L 60" W 24"



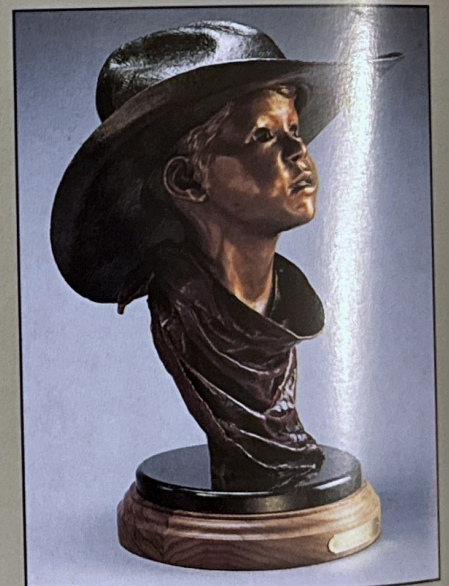
TEA PARTY

Edition of 20  
 H 21" L 10" W 10"



DORETHA

Edition of 20  
 H 19" L 12" W 12"



BANDANNA

Edition of 30  
 H 18" L 16" W 16"



SAVANNAH

Edition of 30  
H 34" L 12" W 12"



WIND IN HER HAIR

Edition of 30  
H 36" L 12" W 14"



SEYCHELLES

Edition of 30  
H 20" L 12" W 14"





THREE'S A CROWD

Edition of 36  
H 24" L 20" W 24"



GILLIE

Edition of 100  
H 22" L 16" W 24"



THE  
GUMSHOE PUPS

Edition of 100  
H 24" L 22" W 28"



HANDLE WITH CARE

Edition of 36  
H 48" L 20" W 24"





ONYX

Edition of 30  
H 16" L 13" W 13"



GOLDEN J

Edition of 30  
H 20" L 14" W 14"



TYKE

Edition of 30  
H 16" L 13" W 13"

BLACK  
CREEK TEAL

Edition of 30  
H 12" L 12" W 24"



GOLDEN RETRIEVER

Edition of 45  
H 36" L 48" W 22"



LADY LABRADOR

Edition of 30  
H 28" L 33" W 18"





## TRUE BLUE

Edition of 20  
H 51" L 28" W 23"



## FLY FISHING

Edition of 18  
H 36" L 34" W 28"

*I* was a professional painter before I started sculpting, and I particularly enjoyed painting landscapes and wildlife in their indigenous habitats. I photographed my bird subjects extensively in the wild, and I have been fortunate to have the opportunity to spend a great deal of time in unspoiled wilderness enjoying not only the bird life, but all that surrounds these fabulous feathered creatures. My goal has always been to capture birds in a moment as I have seen them in the wild, and share that experience with others.



## GREEN HERON

Edition of 30  
H 10" L 15" W 8"





GREAT BLUE

Edition of 30

H 28" L 18" W 27"

CASADOR

Edition of 20

H 30" L 24" W 24"



AMERICAN EGRET

Edition of 12

H 51" L 28" W 28"



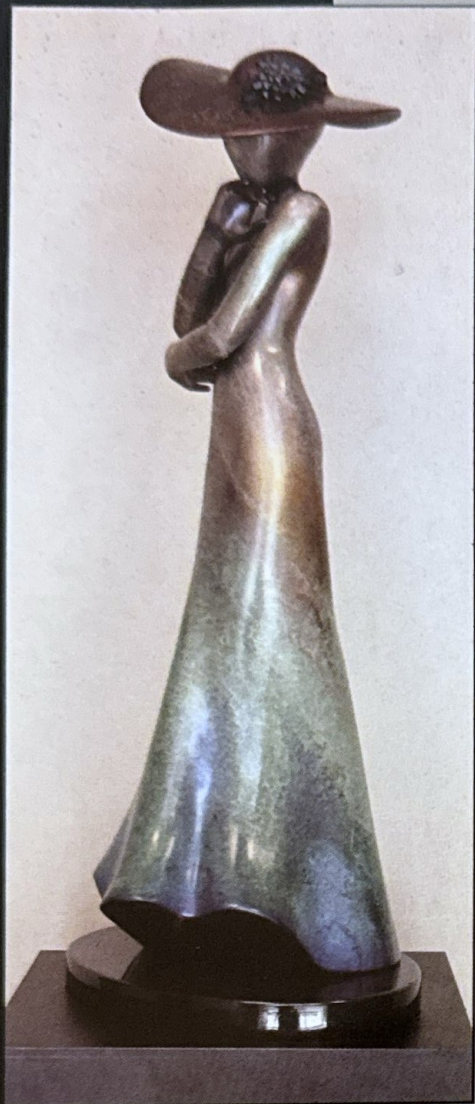
IBIS

Edition of 30

H 18" L 20" W 12"

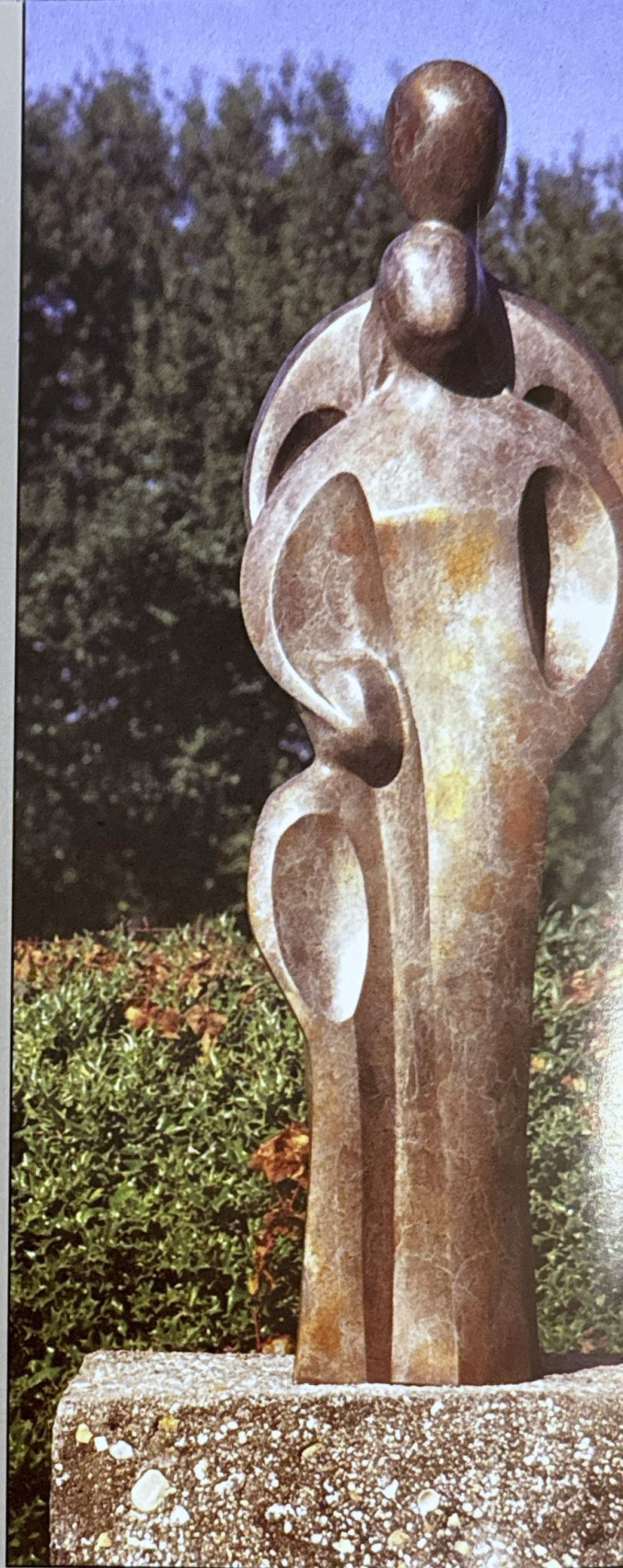






VANITY FAIR

Edition of 50  
H 36" L 18" W 16"



SERENITY

Edition of 30  
H 42" L 8" W 18"



CAROUSEL HORSE

Edition of 50  
H 25" L 10" W 25"





Poppies installation in Palm Beach, FL



Follow the Leader installation in Tallahassee, FL



Outside the Proctor Studio

The human form, ranging from the freedom of childhood to distinguished seniority, has always moved me. I strive to capture the emotion, personality, grace, and honor of all my subject matter, from people to birds to animals. I have been fortunate to be chosen to sculpt many private and public monuments, allowing me the opportunity to meet many new and fascinating people. Over the years, I have bribed children with candy to sit still for photographs, convinced mothers to be included in the sculptures of their children, rolled and played with dogs to release some energy so they would lay down and stay for awhile, and discovered many other fun ways to make unruly subjects want to cooperate. I have made numerous lifelong friendships and have greatly benefited from really getting to know my clients and their families. I hope that my sculptures convey these relationships, capture the birds and animals that I have studied for nearly fifty years, and share the moments in my life that I cherish, for that is the true test of my abilities.

*W. Stanley Proctor*

## PARTIAL LIST OF COLLECTIONS:

White House, Roosevelt Room – Washington, D.C.  
Florida Fallen Sheriffs Memorial – Tallahassee, FL  
WWII Memorial for the Arts Foundation – Farmers Branch, TX  
University of South Alabama – Mobile, AL  
Hackensack University Medical Center Memorial – Hackensack, NJ  
Florida Highway Patrol Memorial – FL  
Ludington City Park – Ludington, Michigan  
Raymond James Financial Art Collection, – St. Petersburg, FL  
Boyd's Bears, Inc. – Gettysburg, Pennsylvania  
Florida Youth Ranch Memorial – Live Oak, FL  
Palm Desert El Paseo Art Collection – Palm Desert, CA  
Florida Governor's Mansion Children's Park – Tallahassee, FL  
National Jewish Center Hospital – Denver, CO  
Living Desert Museum – Palm Desert, CA  
Tallahassee Memorial Hospital – FL  
Polk Museum of Art – Lakeland, FL  
Bay County Public Library – Panama City, FL  
Fairhope High School – Fairhope, AL  
Leroy Collins Leon County Public Library – Tallahassee, FL  
John H. Phipps, Inc. – FL  
Florida Association of Broadcasters – FL  
Byers Choice, Inc. – Chalfont, PA  
Lawton Chiles Foundation – Tallahassee, FL  
Amica, Inc. – Boston, MA  
Maymount Gardens Foundation – Richmond, VA  
First United Methodist Church – Pensacola, FL  
Hillside Galleria – Sedona, AZ  
Palm Beach Percent for the Arts – Palm Beach, FL  
Summerville Central Park – Summerville, SC  
County Courthouse – Moultrie, GA  
Veterans Memorial Park – Collegedale, TN  
Riverside Medical Center – Chicago, IL

## SANDY HAS PARTICIPATED IN THE FOLLOWING SHOWS:

Easton Waterfowl Festival in Easton, MD – 1999 Featured Sculptor  
Southeastern Art Exposition in Charleston, SC – 1998 Featured Sculptor  
Thomasville Plantation Art Festival in Thomasville, GA – 1997 Featured Sculptor  
Artistic Waters Show at the Tampa Aquarium in Tampa, FL  
Birds in Art Exhibition at the Leigh Yawkey Woodson Museum in Wausau, WI  
Safari Club International in Reno and Las Vegas, NV  
Sculpture in the Park in Loveland, CO  
Loveland Sculpture Invitational in Loveland, CO  
Masters Wildlife Show in Ligonier, PA  
Wildlife in Art Exhibition in Wausau, WI  
Sculpture in the South in Summerville, SC  
Proctor Fine Art and Hillside Galleria Tour D' Arte in Sedona, AZ  
Altermann Morris Art Auctions in Houston, TX and Dallas, TX  
Morris Whiteside Renaissance Auction in Hilton Head Island, SC

## PROCTOR FINE ART

—Bronze Sculpture and Paintings—

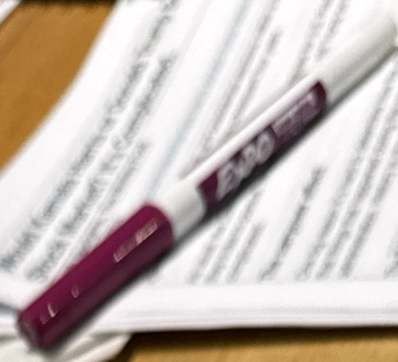
W. Stanley and Elaine Proctor  
*Owners*

671 Highway 179 • Sedona, AZ 86336 • (928) 204-1908  
email: [proctorart@sedona.net](mailto:proctorart@sedona.net) [www.proctorfineart.com](http://www.proctorfineart.com)





World Economic Forum's "Global Competitiveness Index" (GCI) ranks countries based on their ability to attract investment and talent, and to create a competitive environment for businesses. The GCI is based on 144 indicators across 12 categories, including infrastructure, innovation, and leadership. The GCI is a key indicator of a country's economic health and competitiveness. The GCI is a key indicator of a country's economic health and competitiveness. The GCI is a key indicator of a country's economic health and competitiveness.



Summer  
Bathala

Summer 2024  
Bathala





Native Floridian W. Stanley "Sandy" Proctor established his initial reputation as a painter of the wildlife and landscape unique to his north Florida environment, selling his paintings through Sportsman's Edge in New York and Collector's Covey in Dallas. Sandy's work has won numerous distinctions and prestigious exhibition opportunities, including repeat invitations to the Leigh Yawkey Woodson International "Birds in Art" Exhibition, Easton Waterfowl

Festival, Southeastern Wildlife Exposition, and the Masters' Show in Ligonier. Further, as part of Leigh Yawkey Woodson traveling exhibitions, Sandy's work has been on display at the British Museum of Natural History, the Cleveland Museum of Natural History, the Smithsonian, and other museums of national and International recognition.

In the late 1980's, Sandy expanded his artistic interpretation of wildlife into the three dimensional medium of stone. His marble and alabaster pieces may be seen in both corporate and private collections throughout the country, including the Leigh Yawkey Woodson Museum in Wausau, Wisconsin and the Polk Museum of Art in Lakeland, Florida. Additionally, Sandy's alabaster sculpture of the endangered manatee was included in the 1993 Leigh Yawkey Woodson "Wildlife: The Artist's View" show and traveling exhibit.

Sandy now works almost exclusively in bronze. He recently completed commissions for two public libraries and a museum in Florida. His bronzes are located in the corporate headquarters of Barnett Banks, Inc. in Jacksonville and the regional medical center in Tallahassee. In April 1995, the Governor of Florida presented the President of the United States with a gift of Sandy's work entitled "Bandanna." In addition to gallery shows, Sandy returns annually to "Sculpture in the Park," in Loveland, Colorado and participates in other regional and national exhibitions.





*The Shell*  
Bronze  
Height 44"













*Doretha*

Bronze

L: 10" W: 10" H: 19"





Tyke  
Bronze









*Magua*

Bronze

L: 20" W: 14" H: 28.5"