

THE TOWN OF
Windermere



MAYOR AND COUNCIL OF THE TOWN OF WINDERMERE

Mayor Jim O'Brien

Council Members

Andy Williams

Tony Davit

Mandy David

Tom Stroup

Brandi Haines

Agenda

Agenda

April 23, 2024

6:00 PM

TOWN COUNCIL VIRTUAL WORKSHOP

JOIN ZOOM MEETING: [HTTPS://ZOOM.US/](https://zoom.us/)

MEETING ID: 885 4231 9987

PASSCODE 924430

PLEASE TURN OFF ALL CELL PHONES AND PAGERS

PLEASE NOTE: IN ACCORDANCE WITH F.S. 286.26: Person with disabilities needing assistance to participate in any such proceedings should contact the Office of the Clerk at least 48 hours beforehand at (407) 876-2563.

Pursuant to Resolution No. 2005-12 adopted on December 13, 2005, the following Civility Code shall govern all proceedings before the Town of Windermere Town Council:

1. All electronic devices, including cell phones and pagers, shall be either turned off or otherwise silenced.
2. Prolonged conversation shall be conducted outside Council meeting hall.
3. Whistling, heckling, gesturing, loud conversations, or other disruptive behavior is prohibited.
4. Only those individuals who have signed the speaker list and/or/who have been recognized by the Mayor (or Chair) may address comments to the Council.
5. Comments at public hearings shall be limited to the subject being considered by the Council
6. Comments at Open Forums shall be directed to Town issues.
7. All public comments shall avoid personal attacks and abusive language
8. No person attending a Town Council meeting is to harass, annoy, or otherwise disturb any other person in the room.

Any member of the public whose behavior is disruptive and violates the Town of Windermere Civility Code is subject to removal from the Town Council meeting by an officer and such other actions as may be appropriate. PLEASE NOTE: IN ACCORDANCE WITH F.S. 286.0105: Any person who desires to appeal any decision at this meeting will need a record of this proceeding. For this, such person may need to ensure that a verbatim record of such proceeding is made which includes the

AGENDA

- **THE WORKSHOP IS CALLED TO ORDER BY THE MAYOR**
- **FLAG SALUTE**

1. SPECIAL PRESENTATION

a. Projects Update

2. ADJOURN

Projects Update Workshop

Presented to Town Council

Project List

- Local Mitigation Strategy
- West Second Avenue Drainage Improvements
- Bessie Basin
- Butler Basin
- Ward Trail Phase 1/Pedestrian Bridge
- Old Dirt Main
- Dirt Main (Rose Property)
- Windermere Rd./Main St. Roundabout
- Chase/Main Intersection Improvements
- 6th/Main Roundabout Improvements
- Central Phase: Potable Water
- North Phase: Potable Water
- South Phase: Potable Water
- Wastewater Master Plan

Local Mitigation Strategy

- Orange County Local Mitigation Strategy (LMS) is comprised of the County and other governmental jurisdictions within it to plan and prepare for natural disasters. These projects are funded by FEMA and require a 25% match. Town Staff works with Orange County in order to get projects listed on their CIP and try to get those into the funding categories. These typically include projects that the Town, but for these funds, would not be able to proceed with. If a natural disaster occurs within Orange County and an emergency declaration has been issued, funds are allocated to the County as a whole based on need. Each natural disaster will have a different amount allocation attached to it. However, if one jurisdiction doesn't fully allocate the monies from FEMA, then other communities may apply for funding.

Local Mitigation Strategy

- Projects the Town was successful in apply for:
 - 4337-693: 3rd Avenue and Magnolia Street Drainage Improvements
 - 4337-694: 6th Avenue and Butler Street Drainage Improvements
 - 4337-695: 9th Avenue/10th Avenue and Oakdale Street Drainage Improvements
 - 4337-697: West Second Avenue

Local Mitigation Strategy

- Lake Down Retaining Wall Improvements: This project proposes to construct a retaining wall at Lake Down, adjacent to 6th Avenue and the 6th Avenue boat ramp. These improvements will construct a retaining wall to counter erosive action along Lake Down. The existing natural shoreline is constantly losing embankment due to wave action on the lake and other erosive actions. The damage and closure of this roadway would have significant economic loss effects to the users and businesses of west Orange County, including the Town of Windermere. Current Rank 3. Proposed Cost: \$1,328,108
- 5th Avenue and Lake Street Retaining Wall Improvements: This project proposes to construct a retaining wall at Lake Down, adjacent to 5th Avenue and Lake Street. These improvements will construct a retaining wall and sidewalk improvements to counter erosive wave action along Lake Down. The existing natural shoreline is constantly losing embankment due to wave action on the lake. Current Rank 7. Proposed Cost: \$657,110.

LMS: 5th Avenue and Lake Street Retaining Wall Improvements



Local Mitigation Strategy

- 4th Avenue and Magnolia Street Drainage Improvements: This project proposes to construct drainage improvements along 4th Avenue, Magnolia Street and Lake Street Park to address stormwater runoff, flooding, erosion and sediment discharge. Proposed drainage improvements are anticipated to include swales, ditch bottom inlets, drainage pipes, side drains, stormwater retention area next to the lake, and dirt road grading for positive drainage to the road sides. Current Rank 14. Proposed Cost: \$300,000
- Retrofit and Upgrade Flood Control Devices for New and Existing Structures: Multi-jurisdictional. No Current Ranking.

West Second Avenue Drainage Improvements

- HMGP Grant. The project extends from Main St. to the cul-de-sac at the end of West Second Avenue. The project will include slightly widening the street, stormwater improvements and potable water upgrades.
- 100% Design complete
- FDEM Agreement Executed
- Design funded via Phase 1 of HMGP

West Second Avenue Drainage Improvements

- Original Estimate:
 - R&D: \$2,535,980 Town portion: \$633,995
 - Water: \$ 571,985
 - Total: \$3,107,165

- Bid:
 - R&D: \$4,684,694 Town Portion: \$1,171,173
 - Water: \$ 853,993
 - Total: \$5,538,687

West Second Avenue Drainage Improvements

- The Town was awarded an HMGP Grant from the LMS system for Hurricane Irma. Due to the bids coming in well over the original budget, Staff is working with FDEM on a budget increase to cover that cost. In order for the project to be remain viable, there needs to be a Cost Benefit Analysis which equates to a 1. Currently base on our internal estimates we are at a .98. However, we have seen FEM come in at higher rates. Should the number come in less than a 1, Staff will continue to work with FDEM on the reduction of some aspects of the project to maintain the financial viability.

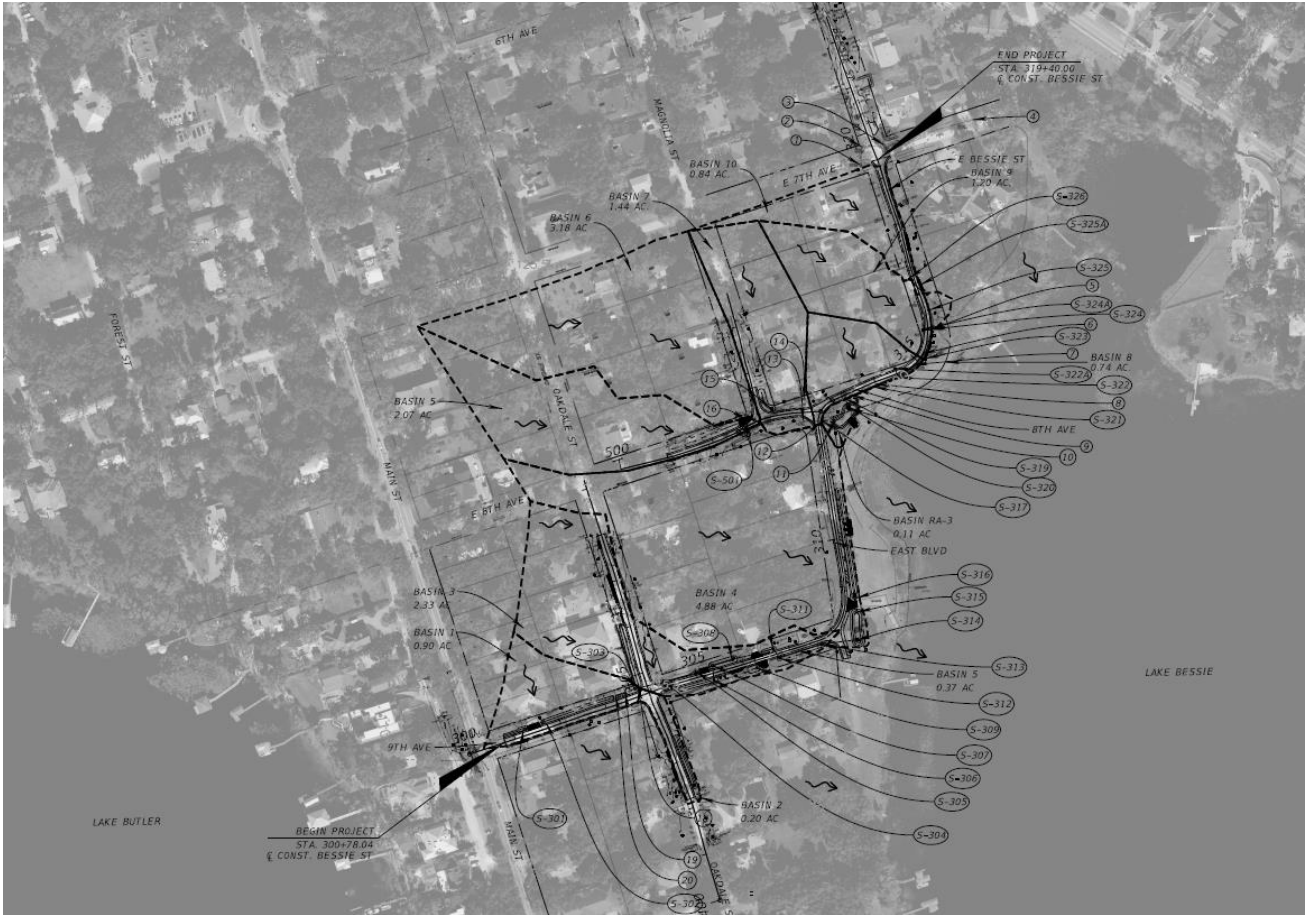
West Second Avenue Drainage Improvements



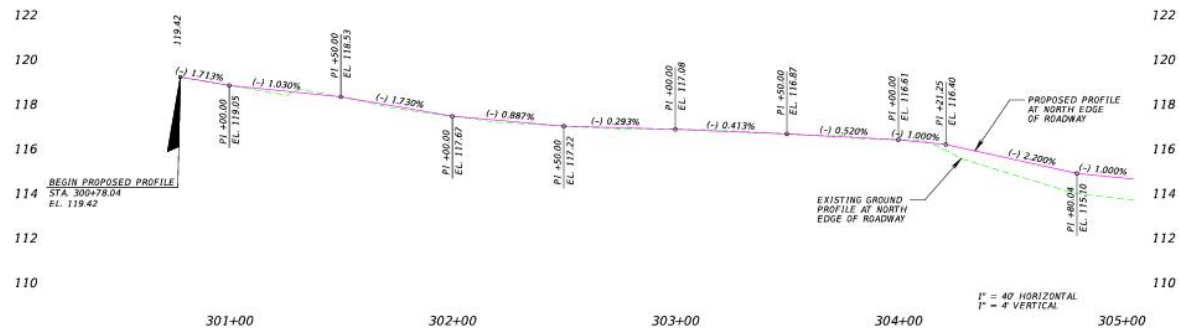
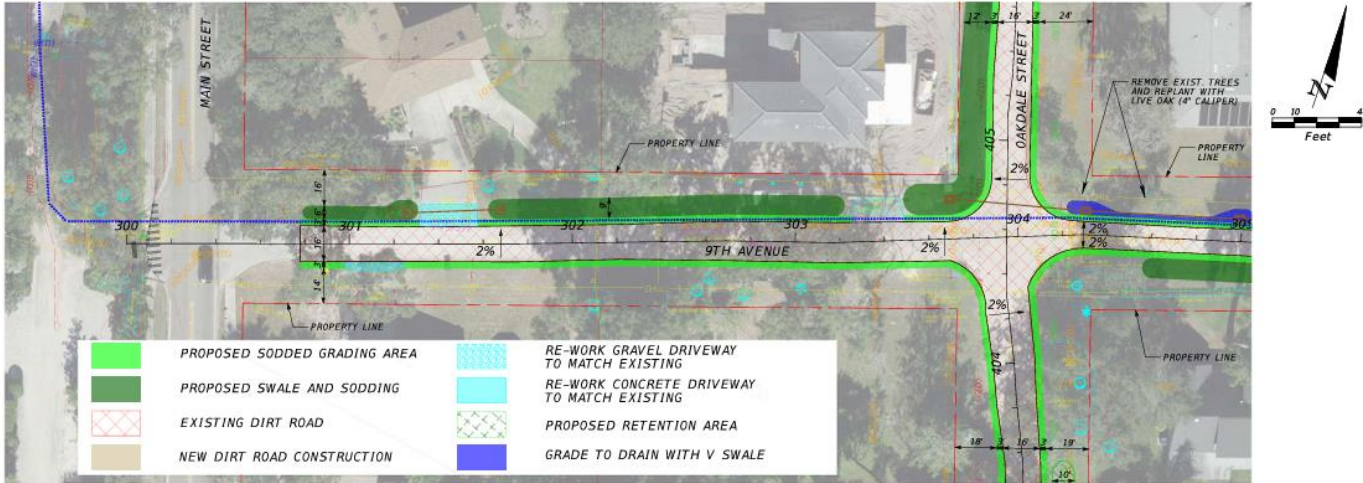
West Second Avenue Timeline

- State Contracting: 3 Months
- Construction Plan/Technical Specifications: 2 Months
- Bidding / Local Procurement: 2 Months
- Construction / Installation: 12 Months
- Local Inspections / Compliance: 3 Months
- State Final Inspections / Compliance: 3 Months
- Closeout Compliance: 2 Months
- Total Period of Performance: 27 Months

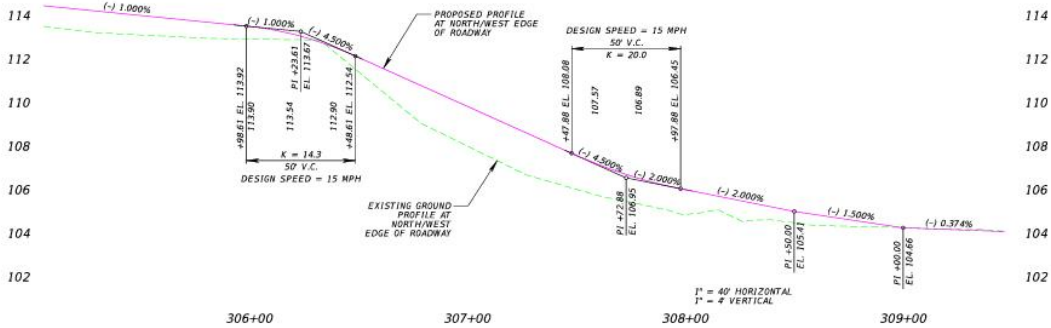
Bessie Basin



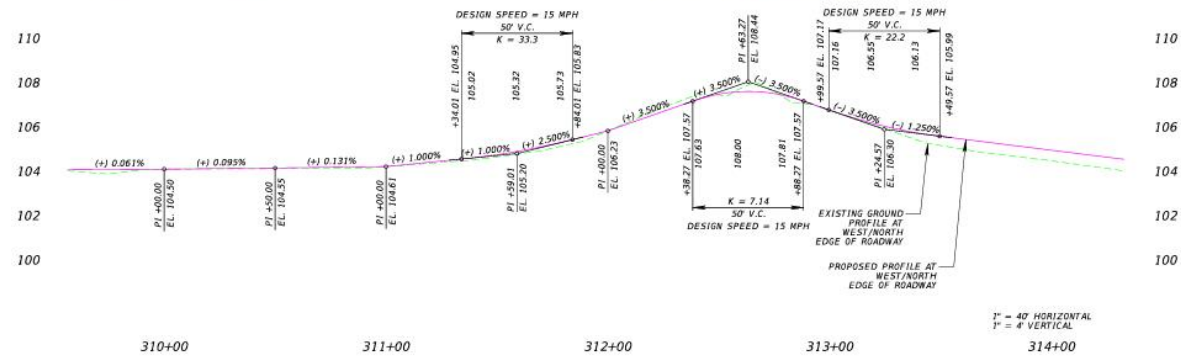
Bessie Basin



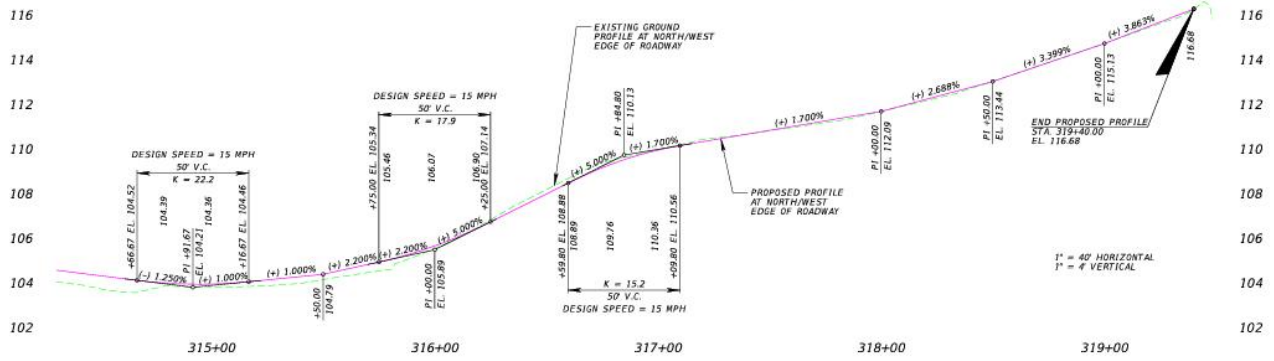
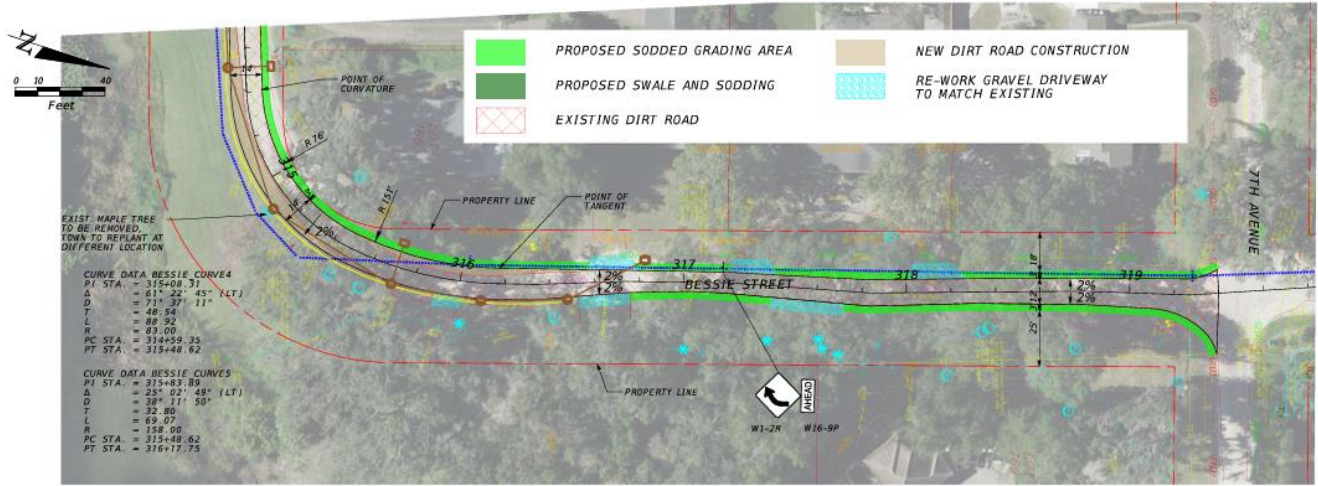
Bessie Basin



Bessie Basin

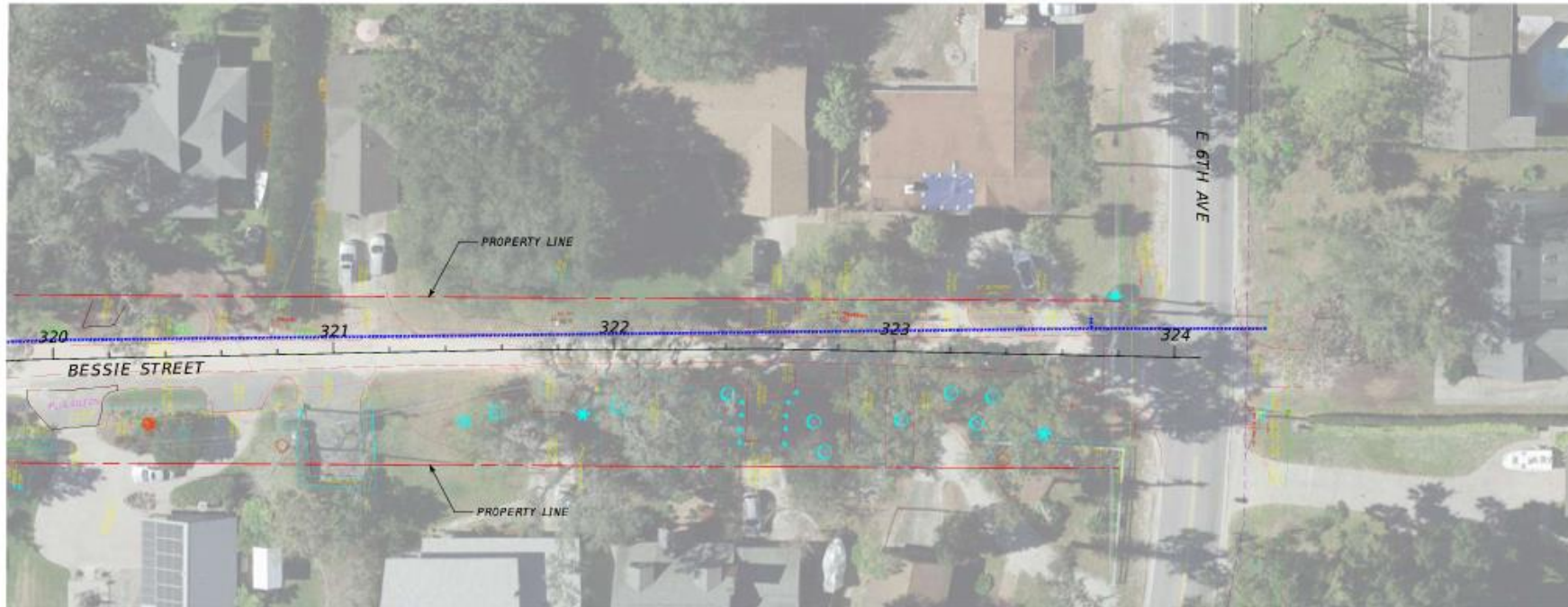


Bessie Basin

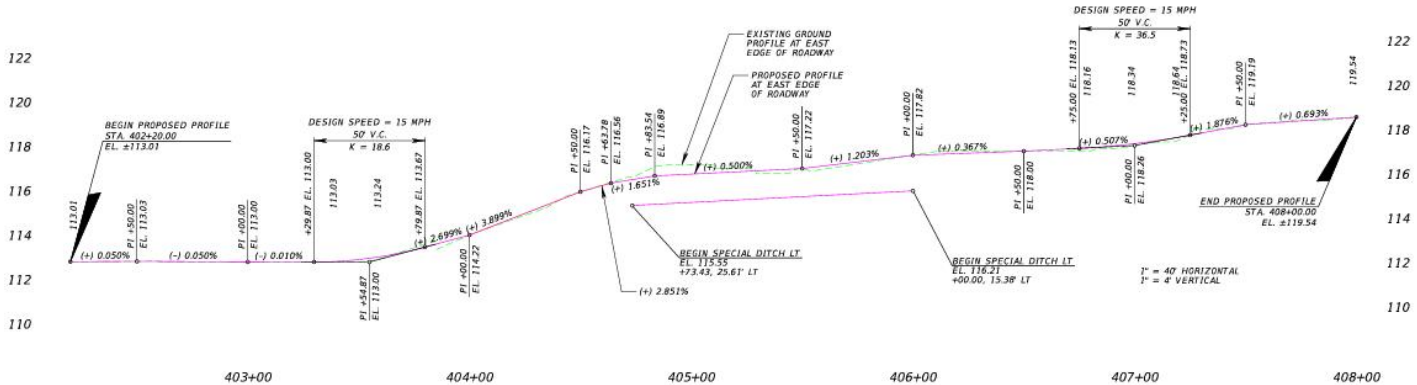
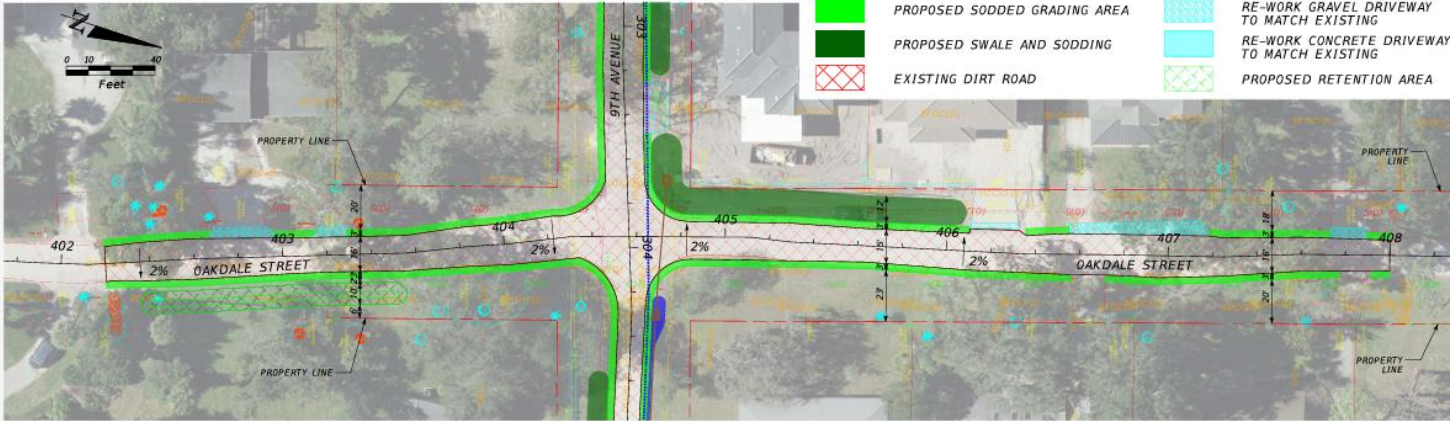


Bessie Basin

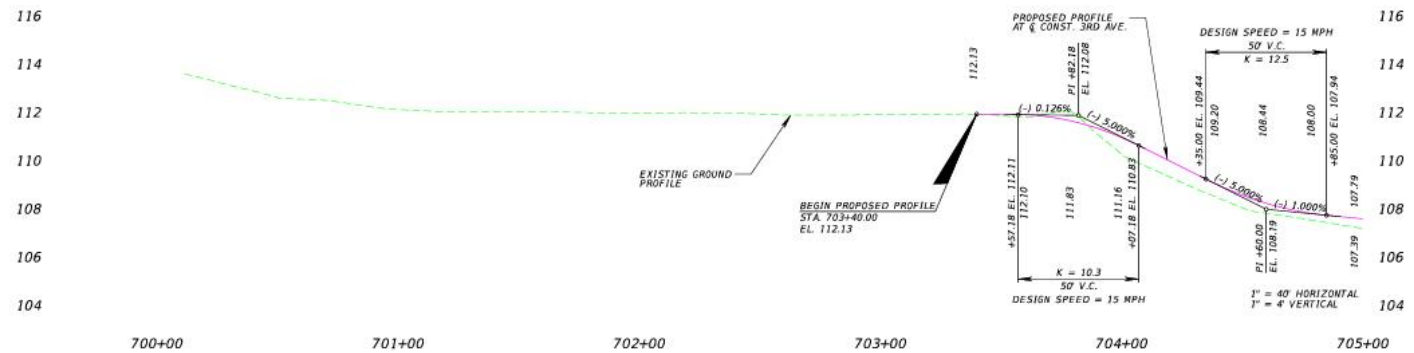
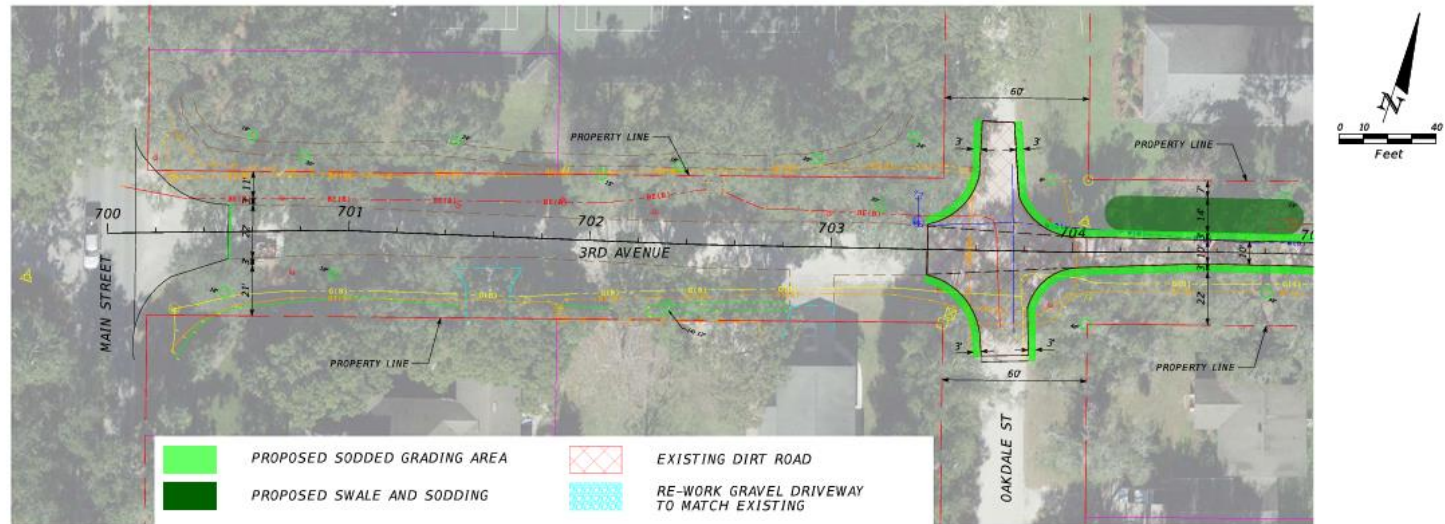
Feet



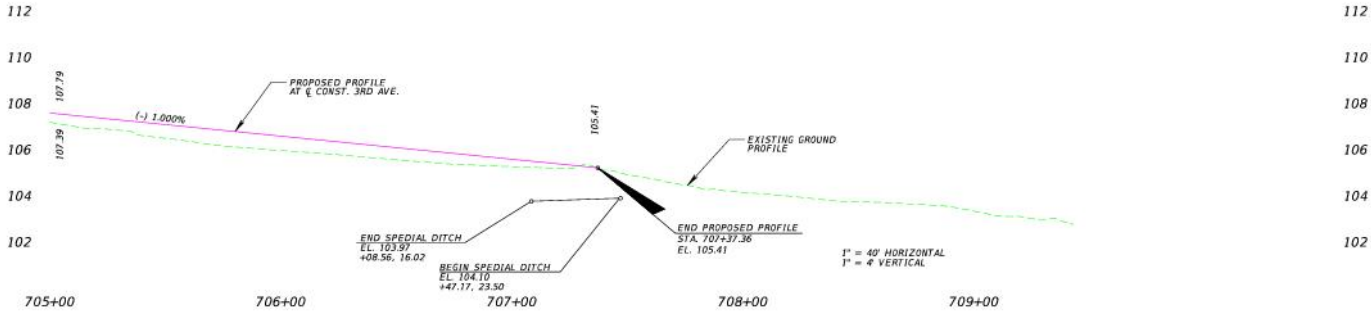
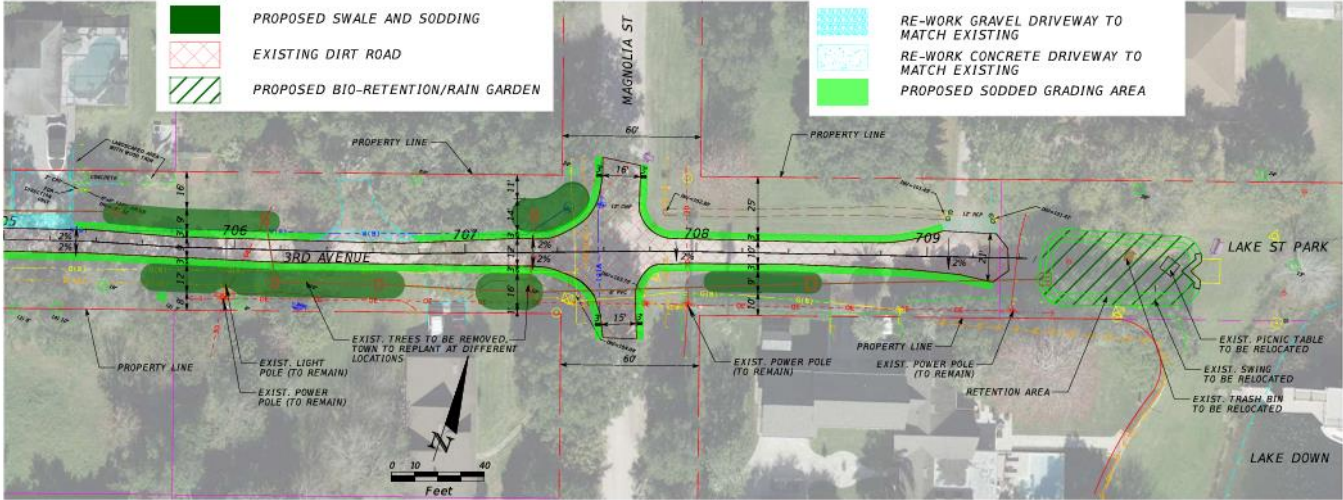
Bessie Basin



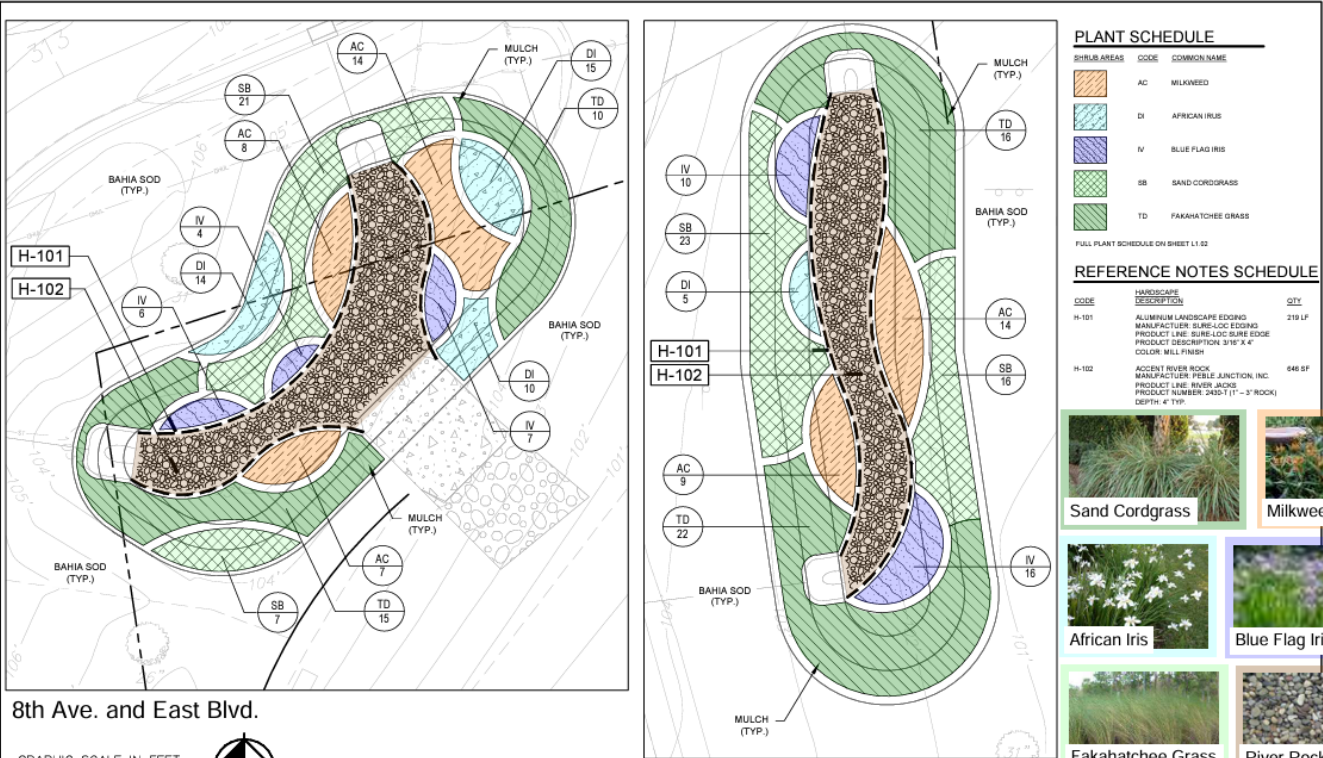
Bessie Basin



Bessie Basin



Bessie Basin



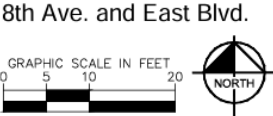
PLANT SCHEDULE

SHRUB AREAS	CODE	COMMON NAME
	AC	MILKWEED
	DI	AFRICAN IRIS
	IV	BLUE FLAG IRIS
	SB	SAND CORDGRASS
	TD	FAKAHATCHEE GRASS

FULL PLANT SCHEDULE ON SHEET L1.02

REFERENCE NOTES SCHEDULE

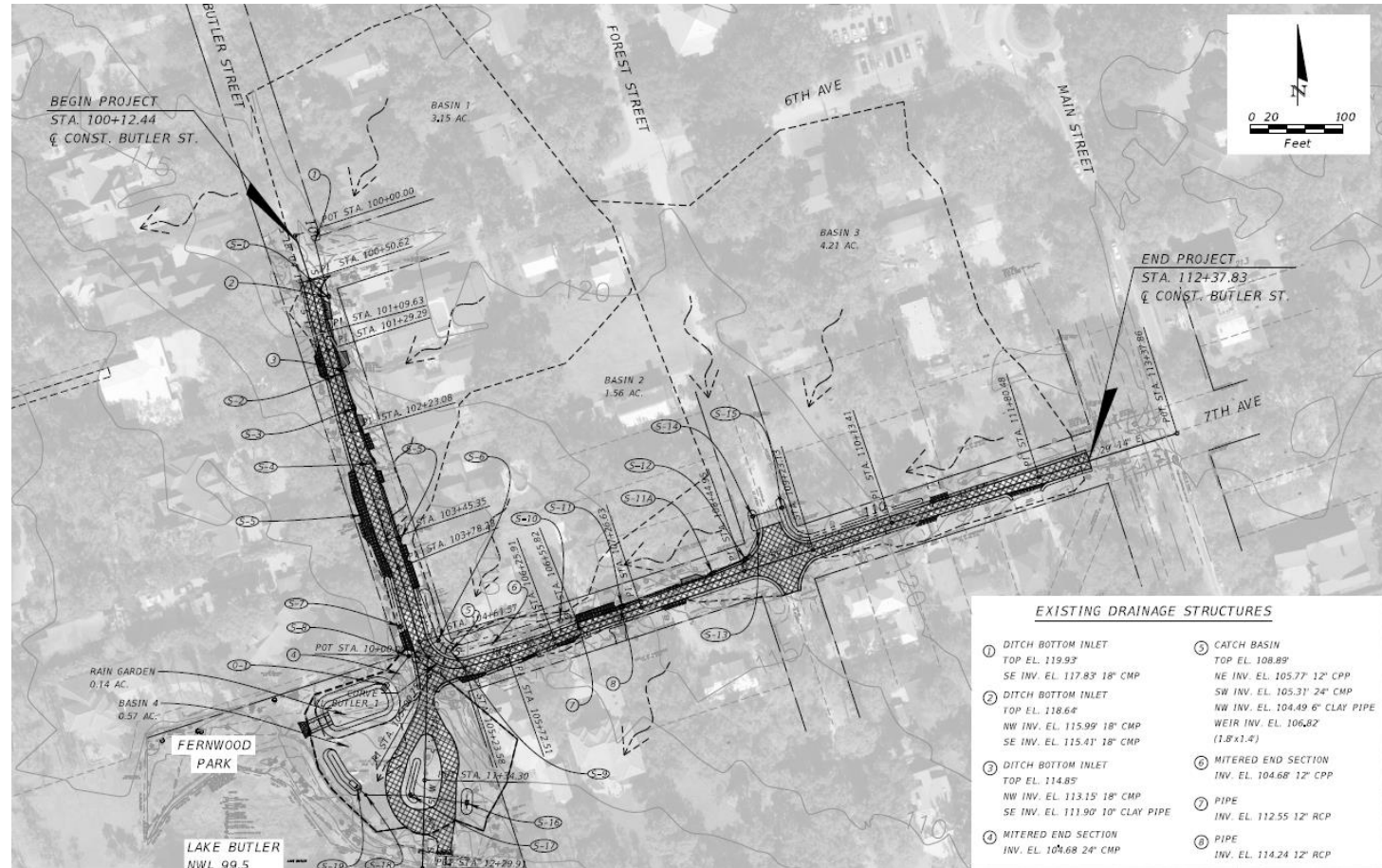
CODE	HARDSCAPE DESCRIPTION	QTY
H-101	ALUMINUM LANDSCAPE EDGING MANUFACTURER: SURE-LOC EDGING PRODUCT LINE: SURE-LOC SURE EDGE PRODUCT DESCRIPTION: 3/8" X 4" COLOR: MELL FINISH	219 LF
H-102	ACCENT RIVER ROCK MANUFACTURER: PEBBLE JUNCTION, INC. PRODUCT LINE: RIVER ROCK PRODUCT NUMBER: 2435-T (1'-3" ROCK) DEPTH: 4" TYP.	646 SF



9th Ave. and East Blvd.

Kimley-Horn Certificate Of Authorization No. 696 189 South Orange Avenue, Suite 1000		WONDER	LANDSCAPE PLAN	SHEET NO. L1.01
---	--	---------------	----------------	------------------------------

Butler Basin



Butler Basin Timeline

- State Contracting: 3 Months
- Construction Plan/Technical Specifications: 2 Months
- Bidding / Local Procurement: 2 Months
- Construction / Installation: 12 Months
- Local Inspections / Compliance: 3 Months
- State Final Inspections / Compliance: 3 Months
- Closeout Compliance: 2 Months
- Total Period of Performance: 27 Months

Ward Trail Phase 1/Pedestrian Bridge

- This phase of the project extends from North Avenue to Park Avenue. The multi modal pathway will meander within the RR ROW. Phase 1 also includes a prefabricate pedestrian bridge. Enhancements also include new lighting, benches and landscaping.
- The Town has received the following financial commitments:
 - Federal Earmark: \$760,000 non-matching
 - State Appropriations: \$1,000,000 non-matching
 - ARPA Funds
- Proposed Costs:
 - Construction: \$2,002,828
 - CEI \$120,170
 - Landscape including 20% contingency: \$159,292
- 90% Design Complete. Contingent on Cultural Assessment

Ward Trail Phase 1/Pedestrian Bridge



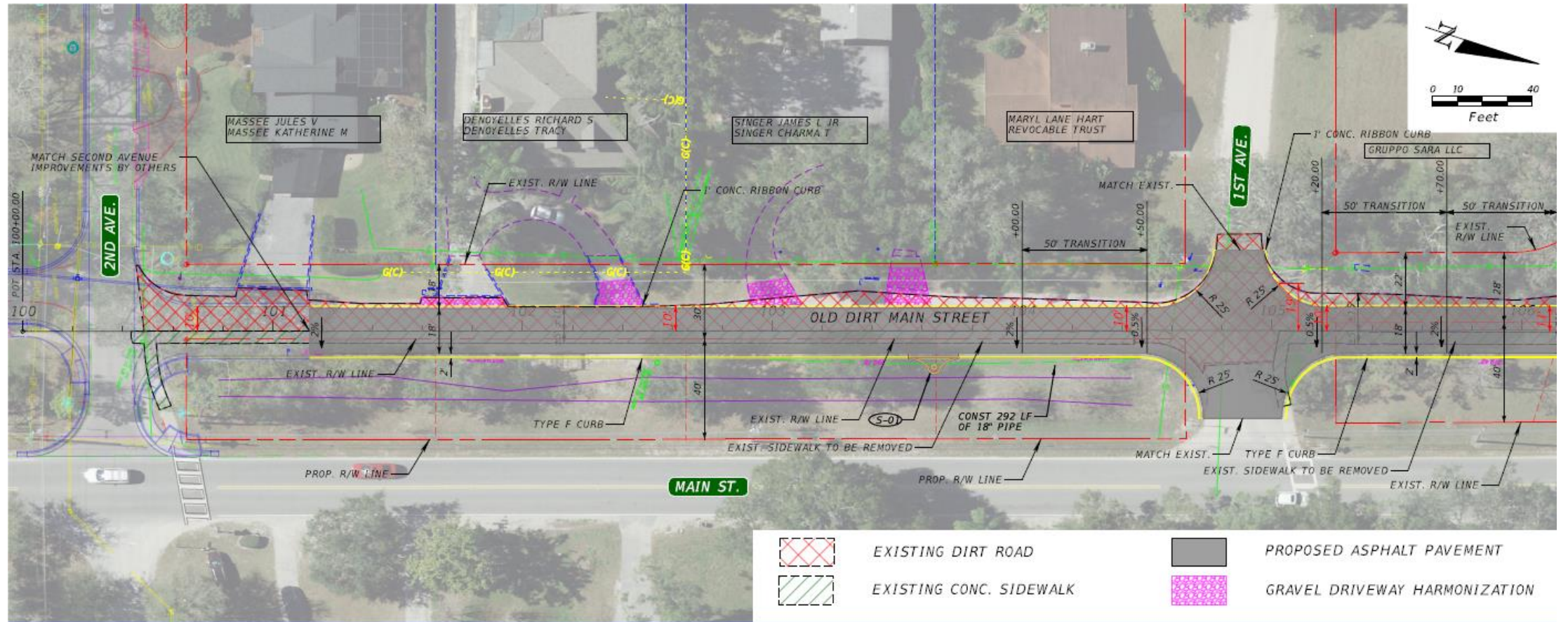
Ward Trail Phase 1/Pedestrian Bridge



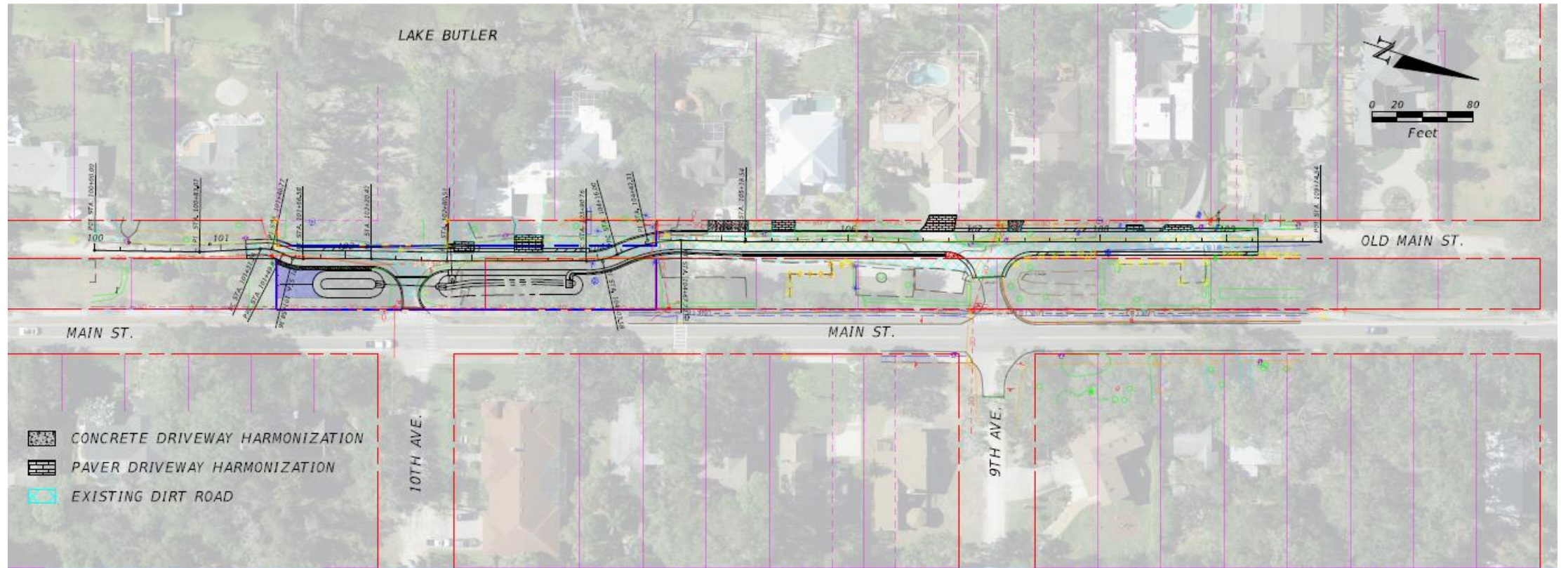
Ward Trail Phase 1



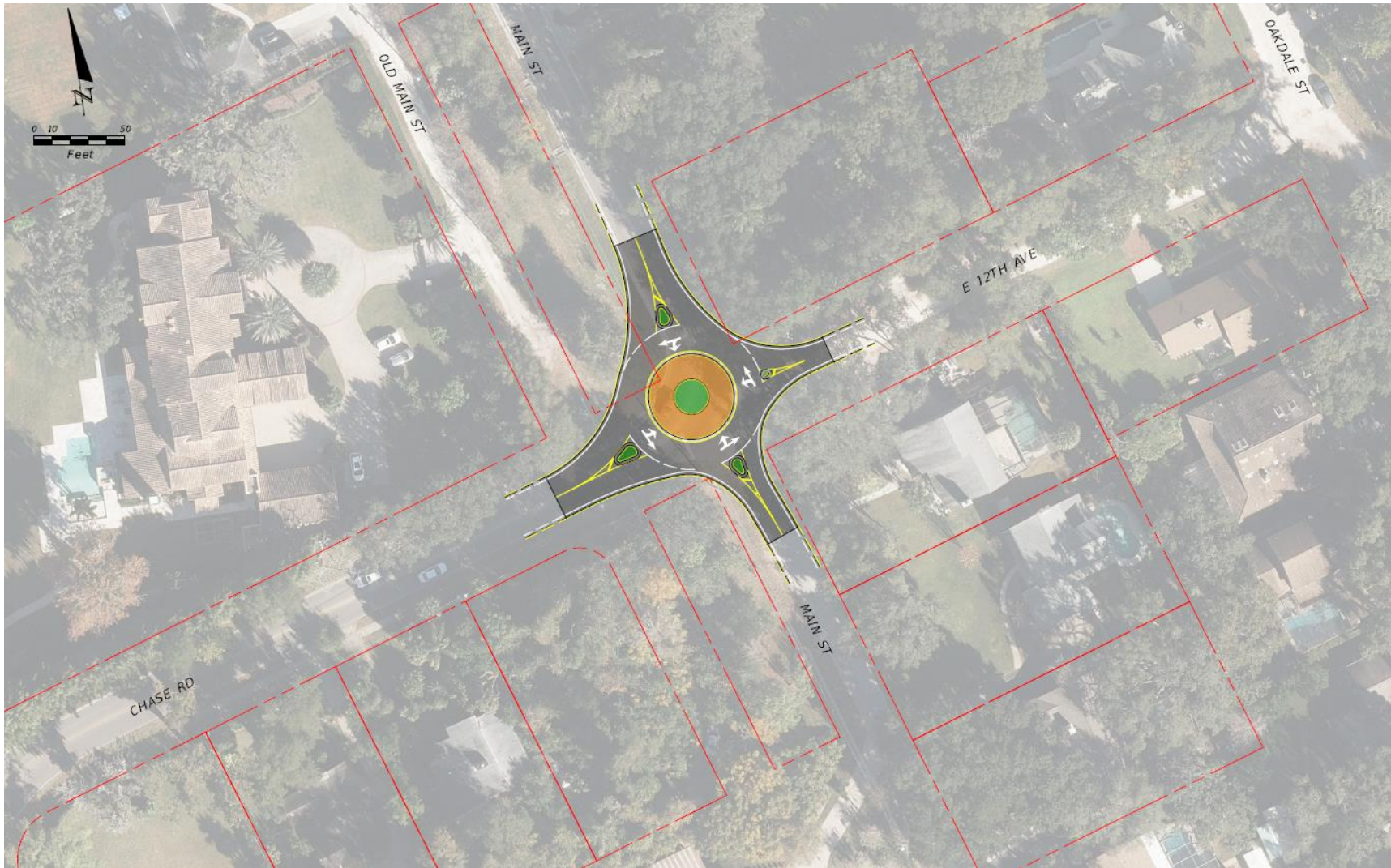
Old Dirt Main



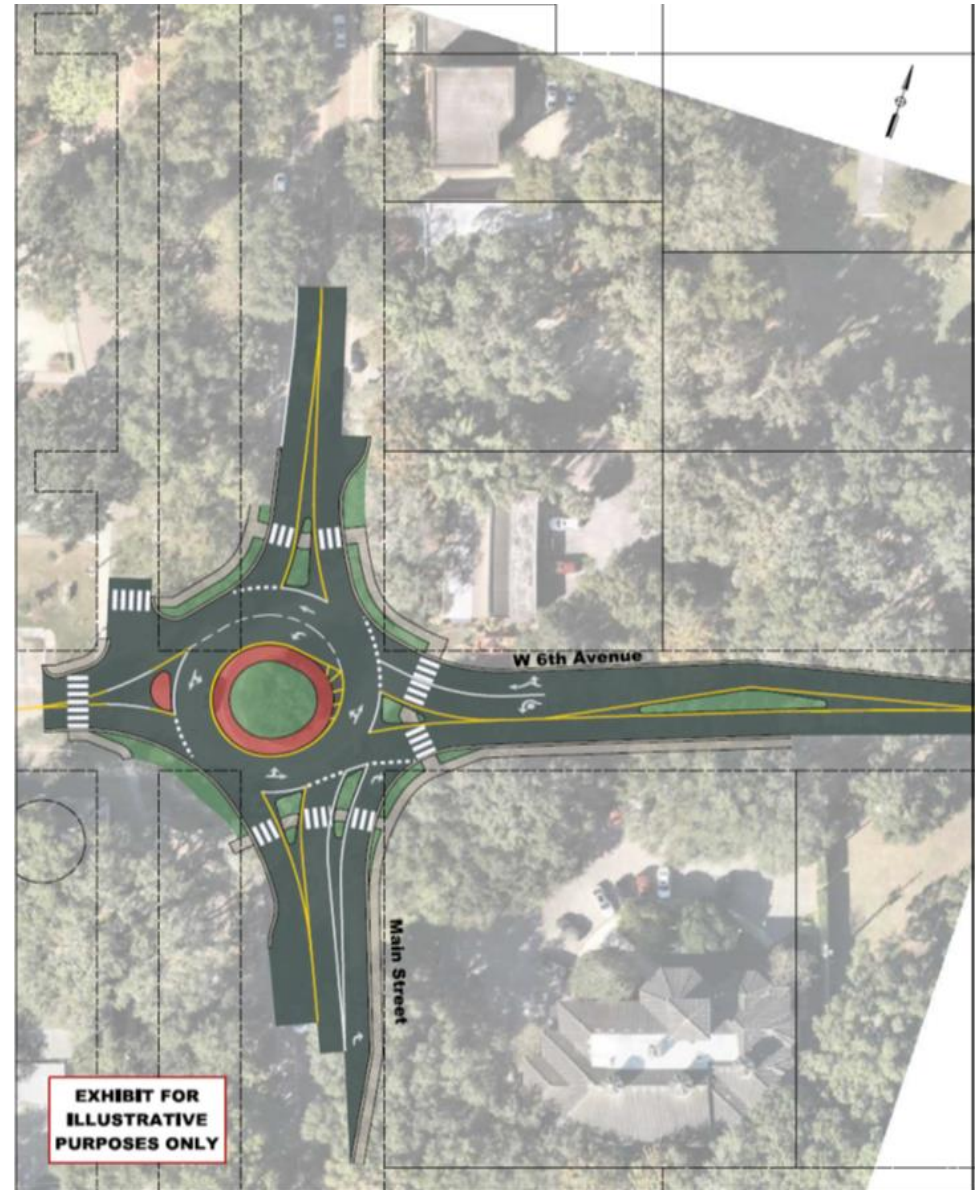
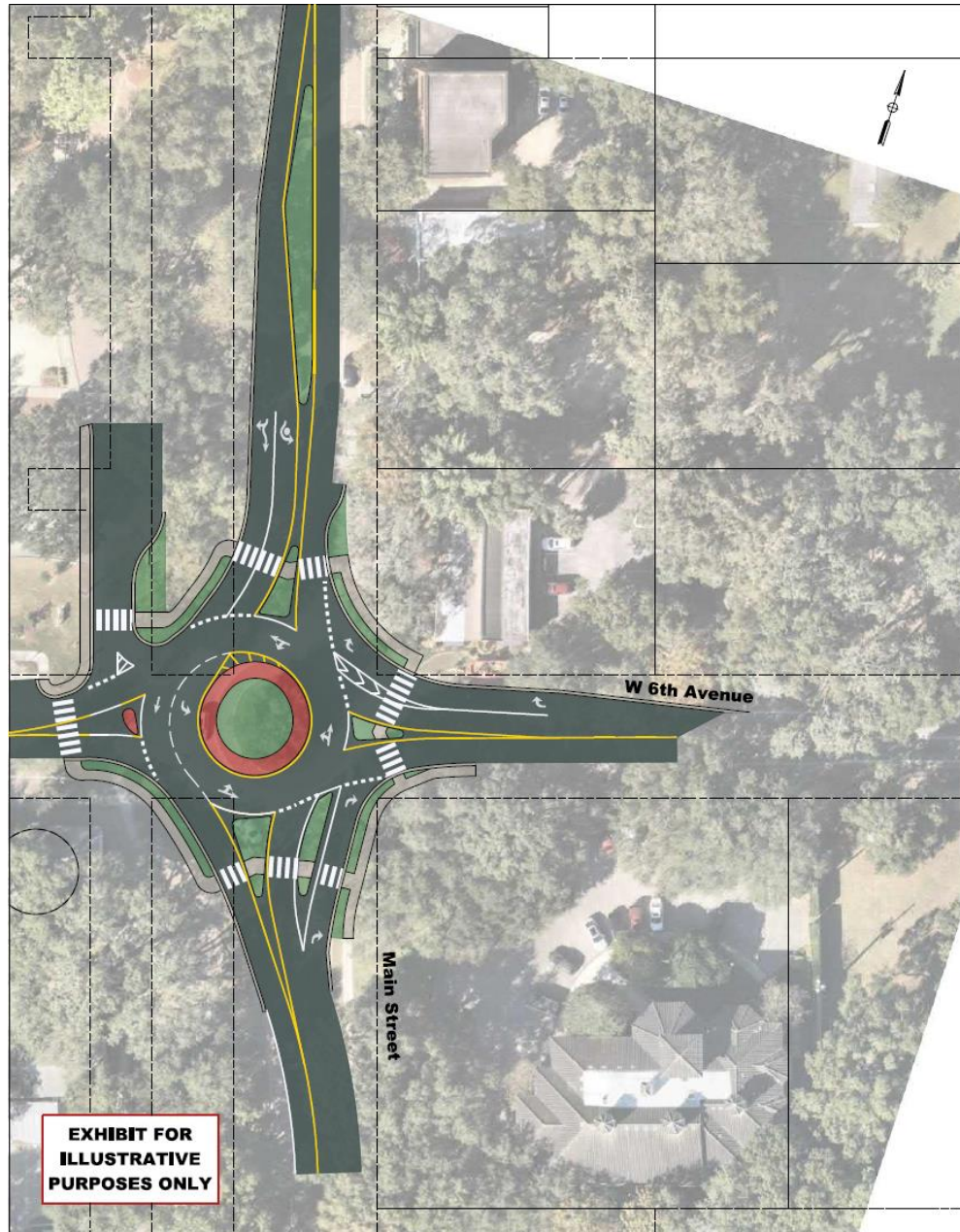
Dirt Main (Rose)



Chase/Main St. Intersection Improvements



6th/Main Roundabout Improvements



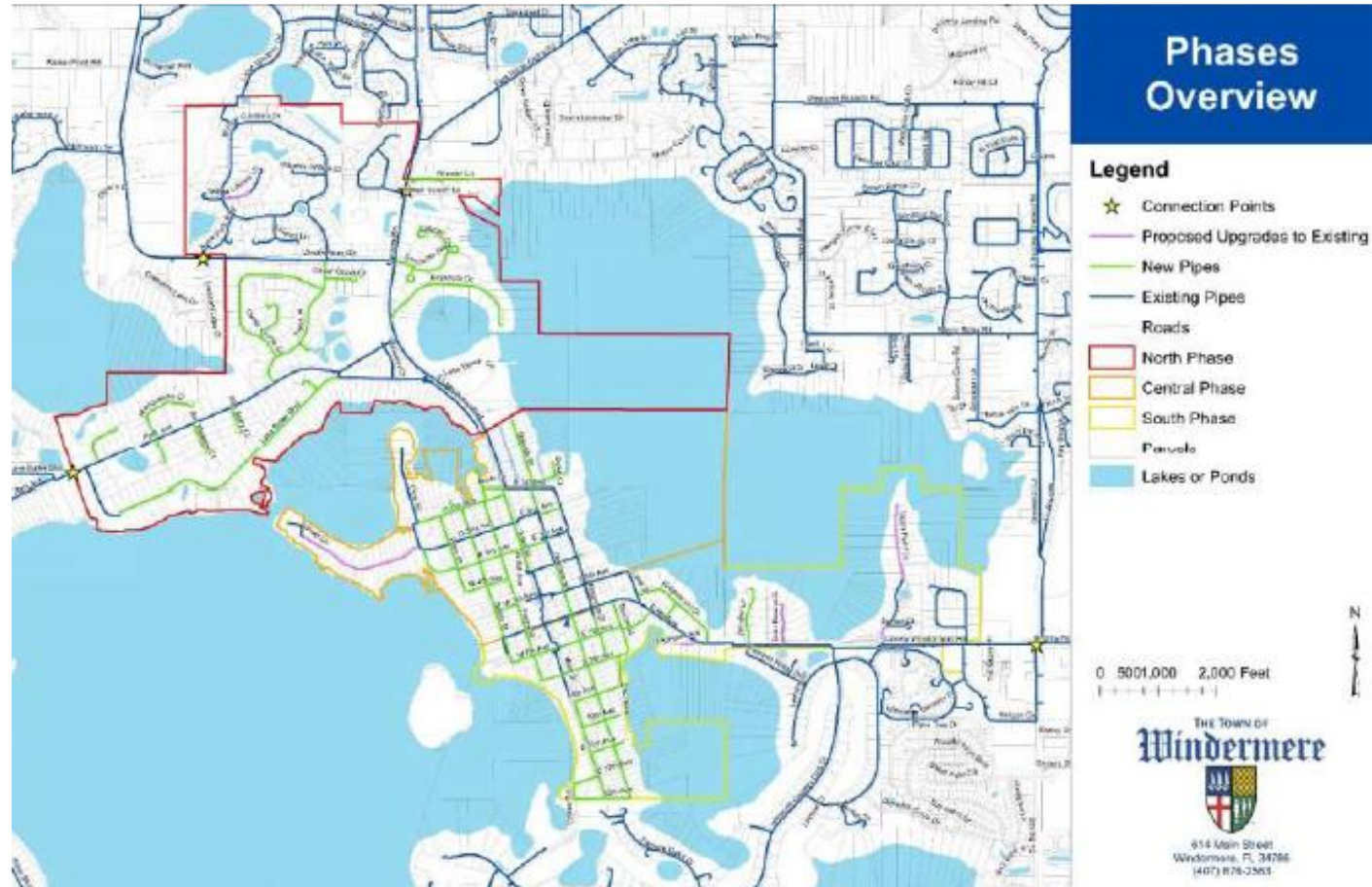
Potable Water System

Existing System

Orange County Utilities (OCU) provides potable water to 41% of the parcels within the Town of Windermere. The remaining parcels are on individual private water wells. This master plan evaluates extending the system that OCU owns and operates to provide water to all parcels.

The drivers for this project are safety, environmental protection, and reliability. This project will improve safety by providing a monitored, safe drinking water supply and by improving fire protection capabilities. This project will protect the environment by reducing the number of wells around the Town's Outstanding Florida Waterbodies. This project will improve reliability by providing a pressurized system that does not require electricity to operate residential well pumps.

Potable Water System



Potable Water Central Phase

- The Central Phase is characterized by older neighborhoods, primarily with dirt roads, and the Town Center and business district. This portion of the town has a mix of homes including original homes dating back to the 1920's, homes built during the expansion of the 1960's, and recent homes. The main artery along the east side of the phase is in place, the majority of the work is the in- fill of residential roads. In the Central phase, 223 parcels are not currently served by OCU. Of the unserved parcels, 185 parcels do not have OCU water available to them current and would gain access under this plan. Of the 185 parcels, 172 are residential lots with homes; four are non-residential sites (includes recreation/public use sites); and nine are miscellaneous (ROW, vacant/conservation, etc.).

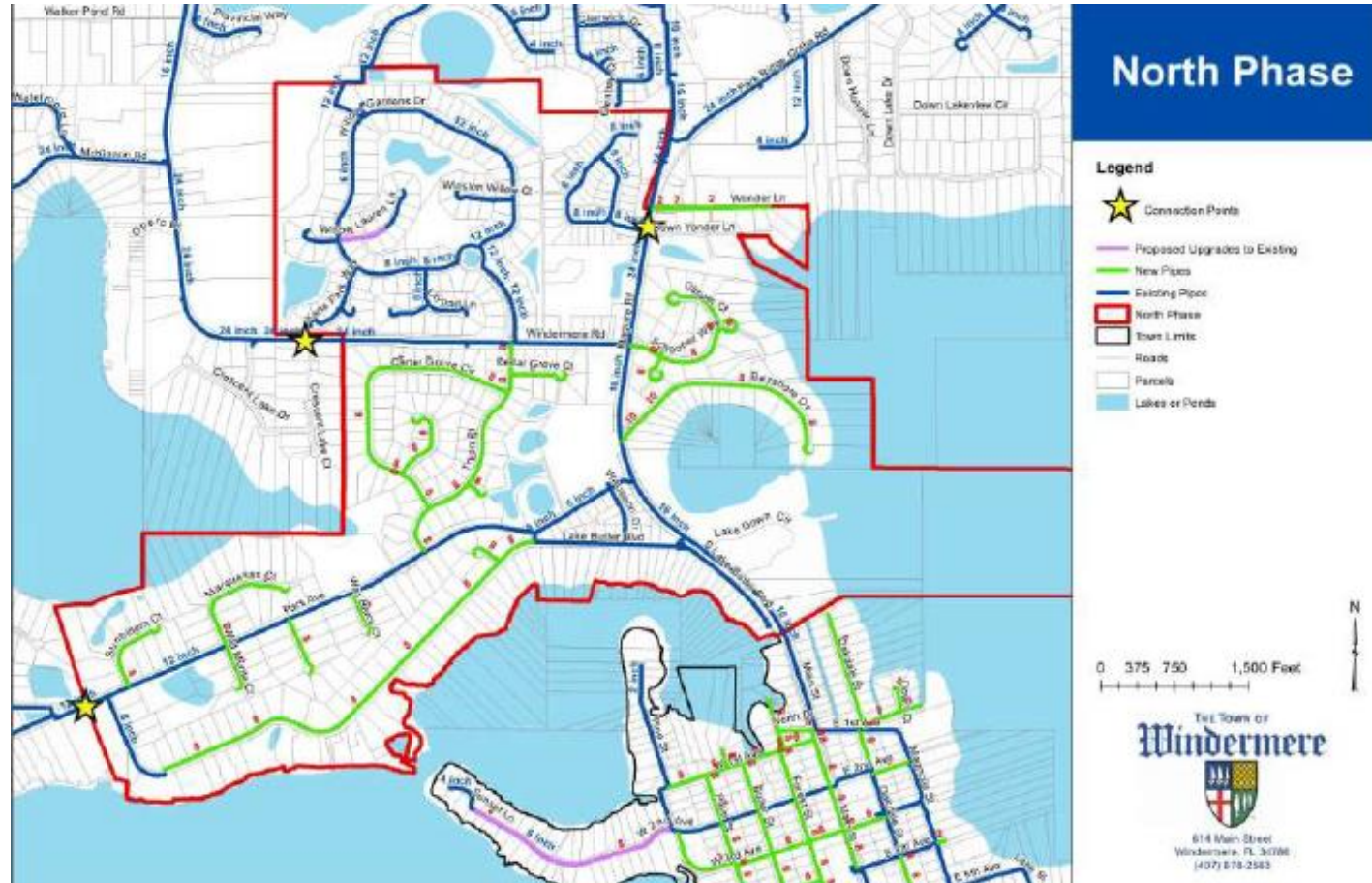
Potable Water Central Phase



Potable Water North Phase

- The North Phase is predominately residences in subdivisions including the Manors, The Willows, Estancia, several smaller subdivisions such as Lake Crescent Reserve, and larger homes along Lake Butler Boulevard. The main arteries through the phase are in place, this will allow the work to be conducted mostly within the subdivisions. In the North Phase, 376 parcels are not currently connected to the OCU system. Of the unserved parcels, 301 parcels would have water available to them when the new lines are connected, the remaining 75 parcels already have water available to them. Of the 301 parcels, 289 are residential lots with a home; two are non-residential sites (includes recreation sites, such as Windermere Recreation Area); and 10 are miscellaneous (ROW, vacant/conservation, etc.).

Potable Water North Phase



Potable Water South Phase

- The South Phase includes a mixture of older neighborhoods and developments built off Conroy- Windermere Road (E 6th Ave). Most of the infrastructure along Conroy- Windermere Road (E 6th Ave) is already in place with the majority of the work required in the older neighborhoods along Oakdale Street and Main Street. The South Phase has a total of 241 parcels that are not connected to OCU water. Of the unconnected parcels, 208 do not currently have access to OCU water and would gain access under this project. Of the 208, 188 are residential lots with homes; three are non-residential sites (includes recreation/public uses sites), and 17 are miscellaneous (ROW, vacant/conservation, etc.).

Potable Water South Phase



Town of Windermere Wastewater Study

- In 2023, the Town of Windermere was awarded \$375,000 of State Appropriations in order to explore the cost and implementation of a wastewater system throughout Town. At the April 9 Town Council Meeting, the Council awarded a contract to Kimley Horn and Associates to complete the pre-design study.
- The study should be completed in 18 months
- This study would enable the Town to seek further funds for design and construction of the wastewater infrastructure system.

Questions/Comments