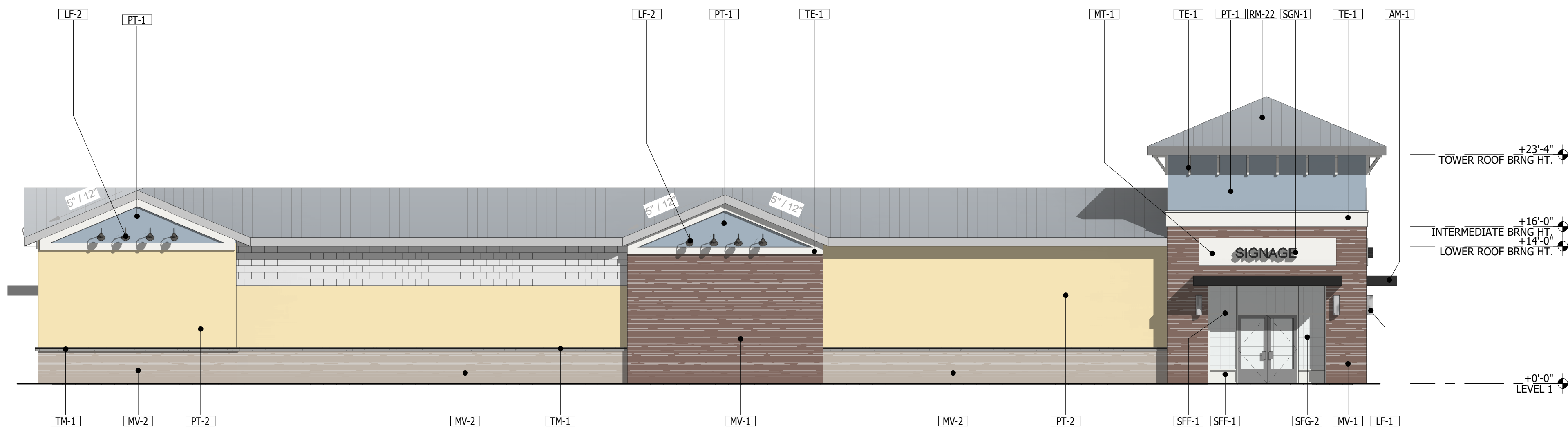
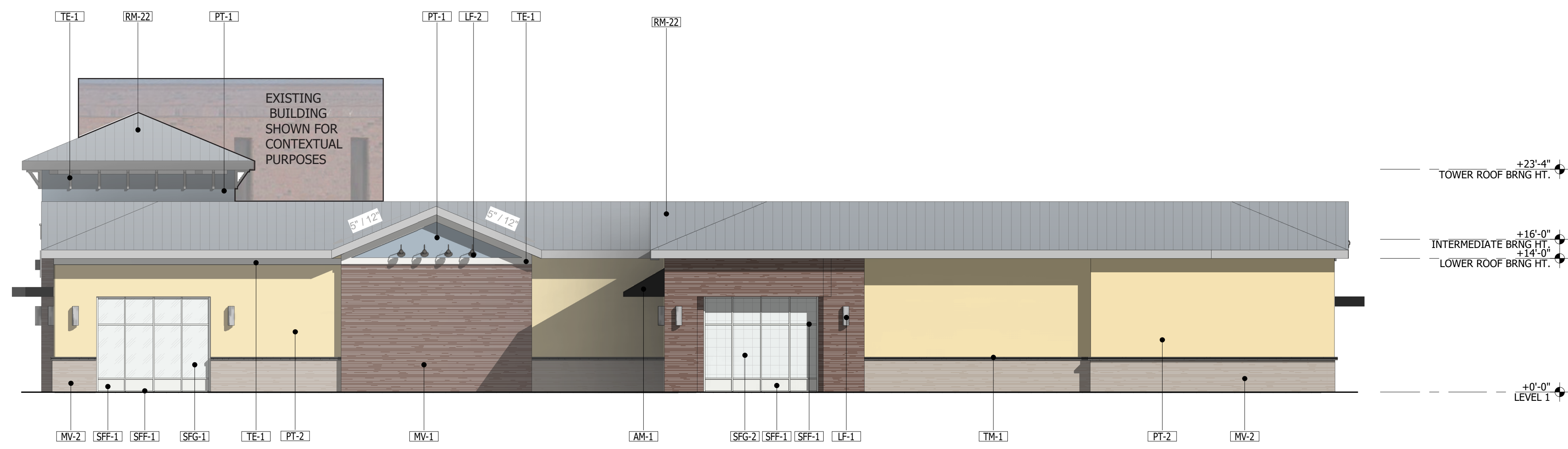


EXTERIOR FINISH SCHEDULE						
MARK	MATERIAL/ PRODUCT	MANUFACTURER	MODEL/ SERIES #	COLOR NAME	COLOR SWATCH	COMMENTS
AM-1	PRE-ENGINEERED METAL AWNING SYSTEM	--	--	BLACK - POWDER COATED		--
FP-1	FIBER CEMENT SIDING	NICHIHA	LATURA V-GROOVE	GRAY		
LF-1	WALL SCONE	SEE ELECTRICAL	SEE ELECTRICAL	--		TO MATCH SW 7076 - CYBERSPACE OR SIMILAR
LF-2	LED GOOSE NECK ANGLED FIXTURE	SEE ELECTRICAL	SEE ELECTRICAL	--		TO MATCH SW 7076 - CYBERSPACE OR SIMILAR
LF-3	LED GOOSE NECK FIXTURE	SEE ELECTRICAL	SEE ELECTRICAL	--		TO MATCH SW 7076 - CYBERSPACE OR SIMILAR
MT-1	EXTERIOR SIGNAGE	PROVIDED UNDER SEPARATE PERMIT	PROVIDED UNDER SEPARATE PERMIT	PROVIDED UNDER SEPARATE PERMIT		PROVIDED UNDER SEPARATE PERMIT
MV-1	BRICK VENEER	ELDORADO	TUNDRABRICK	HARTFORD		MIN 1" THICK LAYER OF TYPE 'N' MORTAR TO BE USED
MV-2	STONE VENEER	ELDORADO	TUNDRABRICK	LATIGO		MIN 1" THICK LAYER OF TYPE 'N' MORTAR TO BE USED
PT-1	PAINTED STUCCO	SHERWIN WILLIAMS	SW6241	ALEUTIAN		SAND TEXTURED FINISH
PT-2	PAINTED STUCCO	SHERWIN WILLIAMS	SW6687	LANTERN LIGHT		SAND TEXTURED FINISH
RM-22	STANDING SEAM METAL ROOF	BERRIDGE	TEE-PANEL	--		TO MATCH SW 7071 - GRAY SCREEN OR SIMILAR
SFF-1	STOREFRONT FRAME	RE: PRODUCT APPROVALS SCHEDULE	RE: PRODUCT APPROVALS SCHEDULE	CLEAR ANODIZED		OR APPROVED SIMILAR
SFG-1	STOREFRONT GLAZING	RE: PRODUCT APPROVALS SCHEDULE	RE: PRODUCT APPROVALS SCHEDULE	RE: GLAZING LEGEND		OR APPROVED SIMILAR
SFG-2	STOREFRONT GLAZING	RE: PRODUCT APPROVALS SCHEDULE	RE: PRODUCT APPROVALS SCHEDULE	RE: GLAZING LEGEND		OR APPROVED SIMILAR,
SGN-1	EXTERIOR SIGNAGE	PROVIDED UNDER SEPARATE PERMIT	PROVIDED UNDER SEPARATE PERMIT	PROVIDED UNDER SEPARATE PERMIT		SIGNAGE SHOWN FOR REFERENCE ONLY; PROVIDED UNDER SEPARATE PERMIT
TE-1	EIFS MOLDING TRIM/ BAND	--	--	--		PAINT TO MATCH SW 7757 - HIGH REFLECTIVE WHITE



BLDG II - NORTH-WEST ELEVATION



BLDG II - SOUTH-EAST ELEVATION

WINDERMERE DOWNTOWN PROPERTY - CORNER OF 6TH AND MAIN, TOWN OF WINDERMERE, FL

DRC05
DRC EXTERIOR ELEVATIONS
 2023 FEB 13
SCOTT + CORMIA
 ARCHITECTURE + INTERIORS

SCOTT + CORMIA Architecture and Interiors, LLC
 429 South Keller Road, Suite 200, Orlando, Florida 32810 407.660.2766 www.scottcormia.com FL#: AA26002980

THE COLORS SHOWN IN THIS RENDERING ARE CLOSE APPROXIMATIONS. DUE TO INK VARIATIONS AND DIFFERENCES IN PRINTERS, AN EXACT COLOR MATCH CANNOT BE ACHIEVED, THE VIEWER IS ADVISED TO USE THIS RENDERING AS A GUIDELINE FOR THE ARRANGEMENT OF COLORS, AND THEN REFER TO THE ACTUAL COLOR OR MATERIAL SAMPLES PROVIDED.