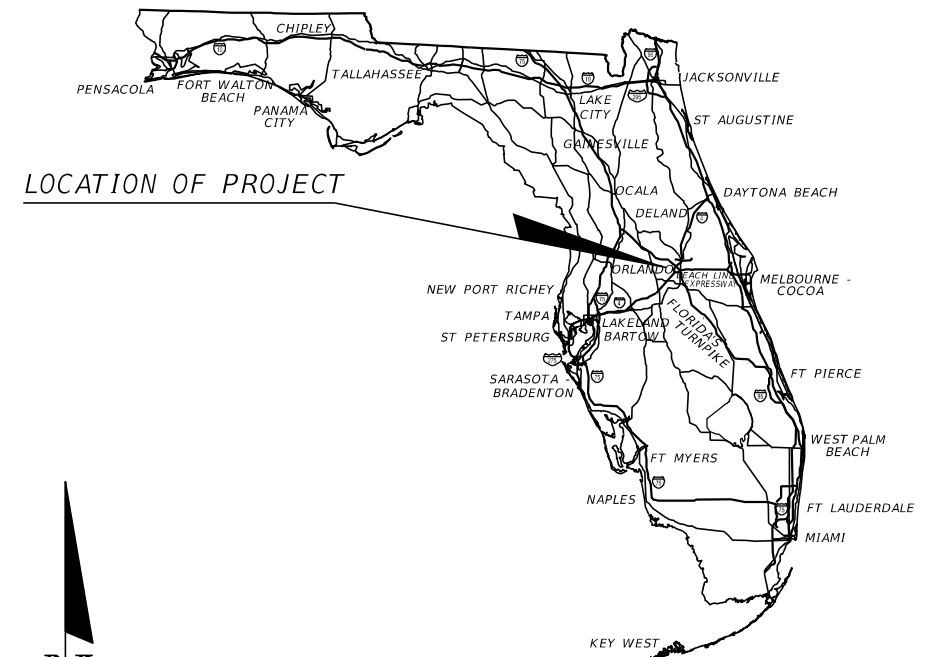


TOWN OF WINDERMERE

CONCEPT PLANS

**BUTLER STREET & 7TH AVE.
ROADWAY & DRAINAGE IMPROVEMENTS**

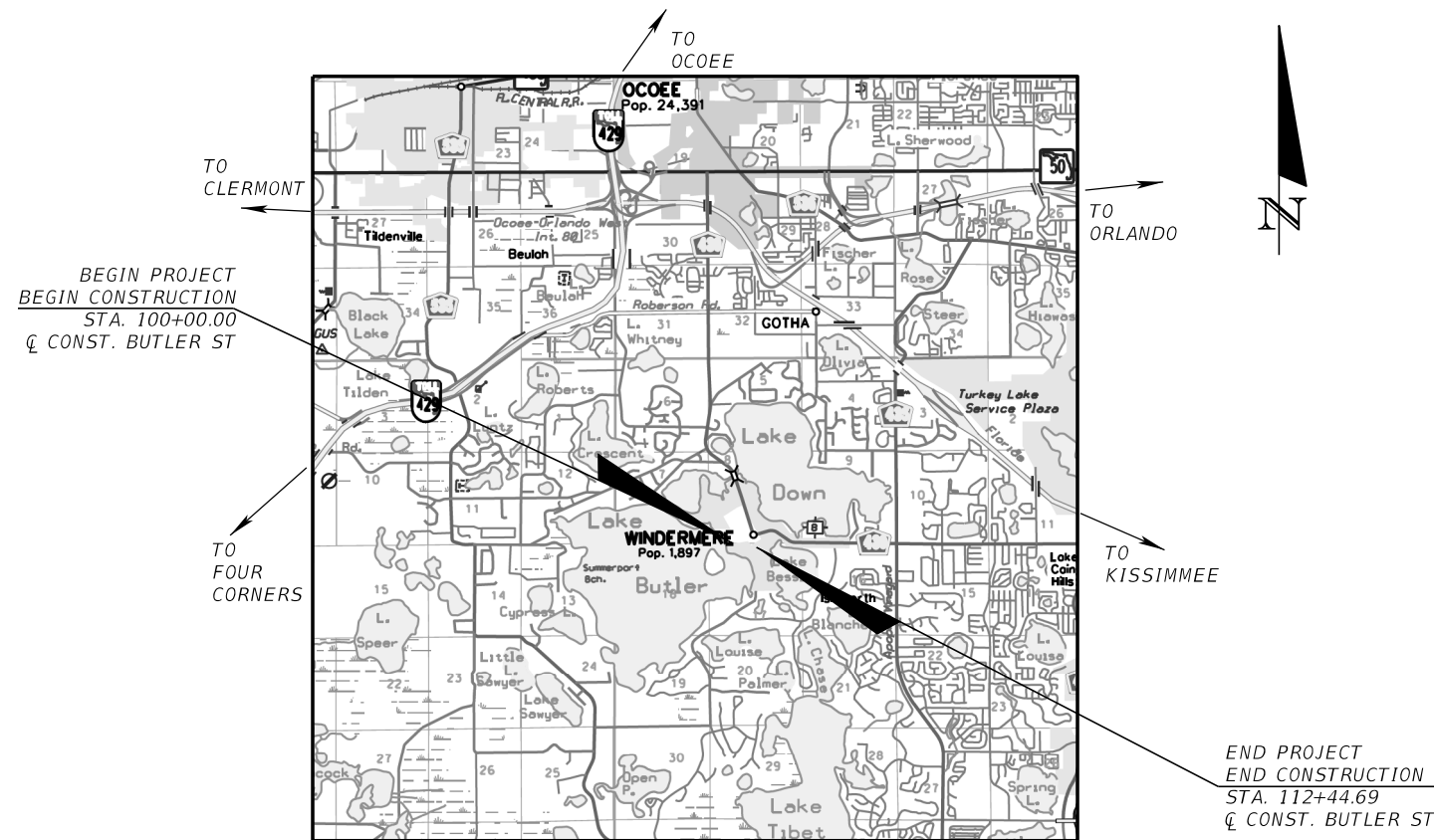


CONTRACT PLANS COMPONENTS

ROADWAY PLANS

INDEX OF ROADWAY PLANS

SHEET NO.	SHEET DESCRIPTION
1	KEY SHEET
2	DRAINAGE MAP
3-5	TYPICAL SECTION
6-8	PLAN-PROFILE SHEET
9-18	CROSS SECTIONS



GOVERNING DESIGN STANDARDS:

Florida Department of Transportation, FY2020-21 Standard Plans

GOVERNING STANDARD SPECIFICATIONS:

Florida Department of Transportation, July 2020 Standard Specifications for Road and Bridge Construction at the following website:
<http://www.fdot.gov/programmanagement/Implemented/SpecBooks>

PROJECT LENGTH IS BASED ON C. OF CONSTRUCTION

LENGTH OF PROJECT		
	BUTLER STREET & 7TH AVENUE	
	LINEAR FEET	MILES
ROADWAY	1244.690	0.236
NET LENGTH OF PROJECT	1244.690	0.236

Kimley»Horn

189 SOUTH ORANGE AVENUE
SUITE 1000
ORLANDO, FLORIDA 32801
TEL: (407) 898-1511
VENDOR NO. F560885615-001
CERTIFICATE OF AUTHORIZATION NO. 696

CONSTRUCTION CONTRACT NO.	FISCAL YEAR	SHEET NO.
	20	1

THE OFFICIAL RECORD OF THIS SHEET IS THE ELECTRONIC FILE DIGITALLY SIGNED AND SEALED UNDER RULE 61G15-23.004, F.A.C.



EXISTING DRAINAGE STRUCTURES

- ① DITCH BOTTOM INLET
TOP EL. 119.93'
SE INV. EL. 117.83' 18" CMP
- ② DITCH BOTTOM INLET
TOP EL. 118.64'
NW INV. EL. 115.99' 18" CMP
SE INV. EL. 115.41' 18" CMP
- ③ DITCH BOTTOM INLET
TOP EL. 114.85'
NW INV. EL. 113.15' 18" CMP
SE INV. EL. 111.90' 10" CLAY PIPE
- ④ MITERED END SECTION
INV. EL. 104.68 24" CMP
- ⑤ CATCH BASIN
TOP EL. 108.89'
NE INV. EL. 105.77' 12" CPP
SW INV. EL. 105.31' 24" CMP
NW INV. EL. 104.49 6" CLAY PIPE
WEIR INV. EL. 106.82'
(1.8'x1.4')
- ⑥ MITERED END SECTION
INV. EL. 104.68' 12" CPP
- ⑦ PIPE
INV. EL. 112.55 12" RCP
- ⑧ PIPE
INV. EL. 114.24 12" RCP

LAKE BUTLER
NWL 99.5

END PROJECT
STA. 112+44.69
CL CONST. BUTLER ST.

REVISIONS			
DATE	DESCRIPTION	DATE	DESCRIPTION

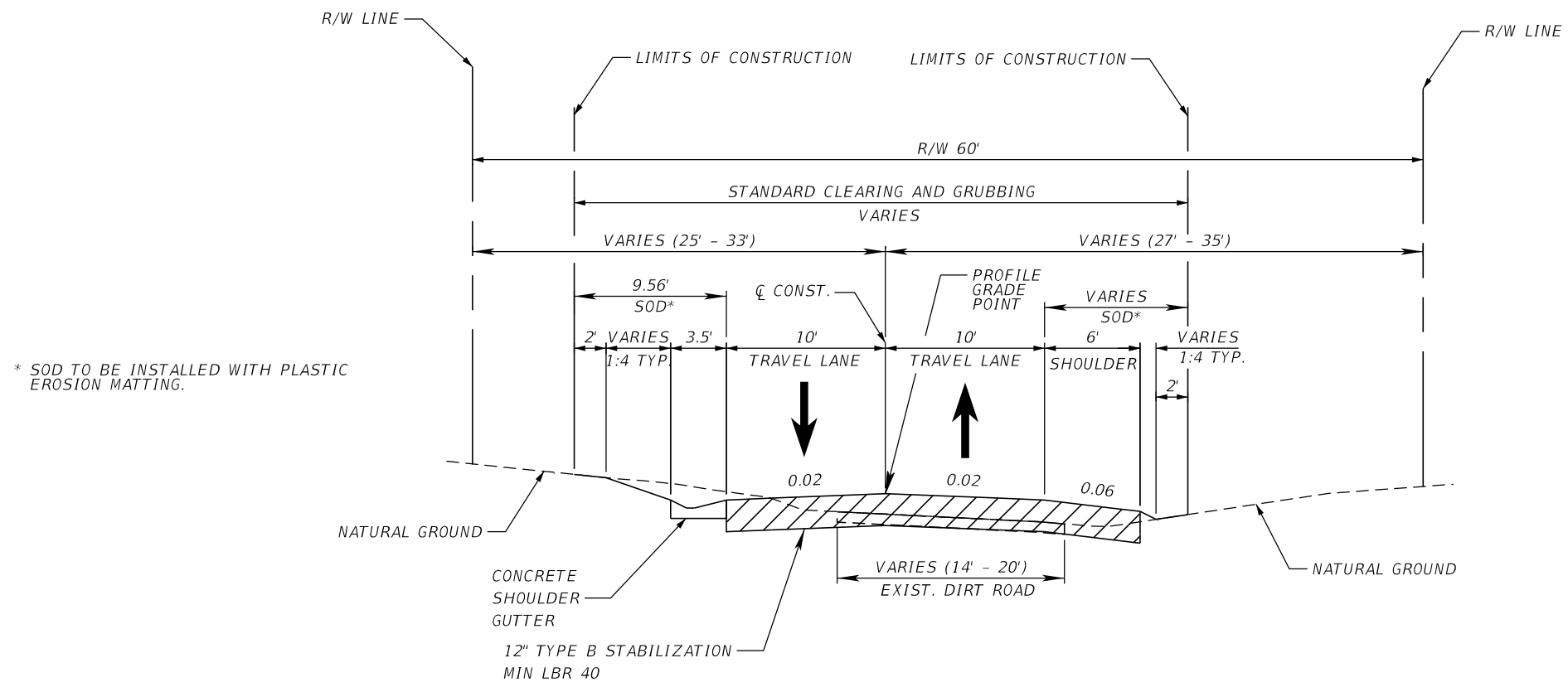
Kimley»Horn
 Certificate Of Authorization No. 696
 Victor Gallo, P.E.
 P.E. License No. 75592
 189 South Orange Avenue, Suite 1000
 Orlando, Florida 32801



**TOWN OF
WINTERMERE**

DRAINAGE MAP

SHEET NO.
2



* SOD TO BE INSTALLED WITH PLASTIC EROSION MATTING.

TYPICAL SECTION

BUTLER STREET

STA. 100+74.27 TO STA. 102+50.00
 (REFER TO PLAN-PROFILE (01) FOR STA. 100+00.00 TO STA. 100+74.27 - IN INTERSECTION)

N.T.S.

DESIGN SPEED = 20 MPH

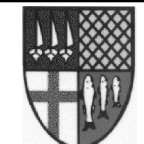
NEW CONSTRUCTION

12" TYPE B STABILIZATION MIN LBR 40

BUTLER STREET

REVISIONS			
DATE	DESCRIPTION	DATE	DESCRIPTION

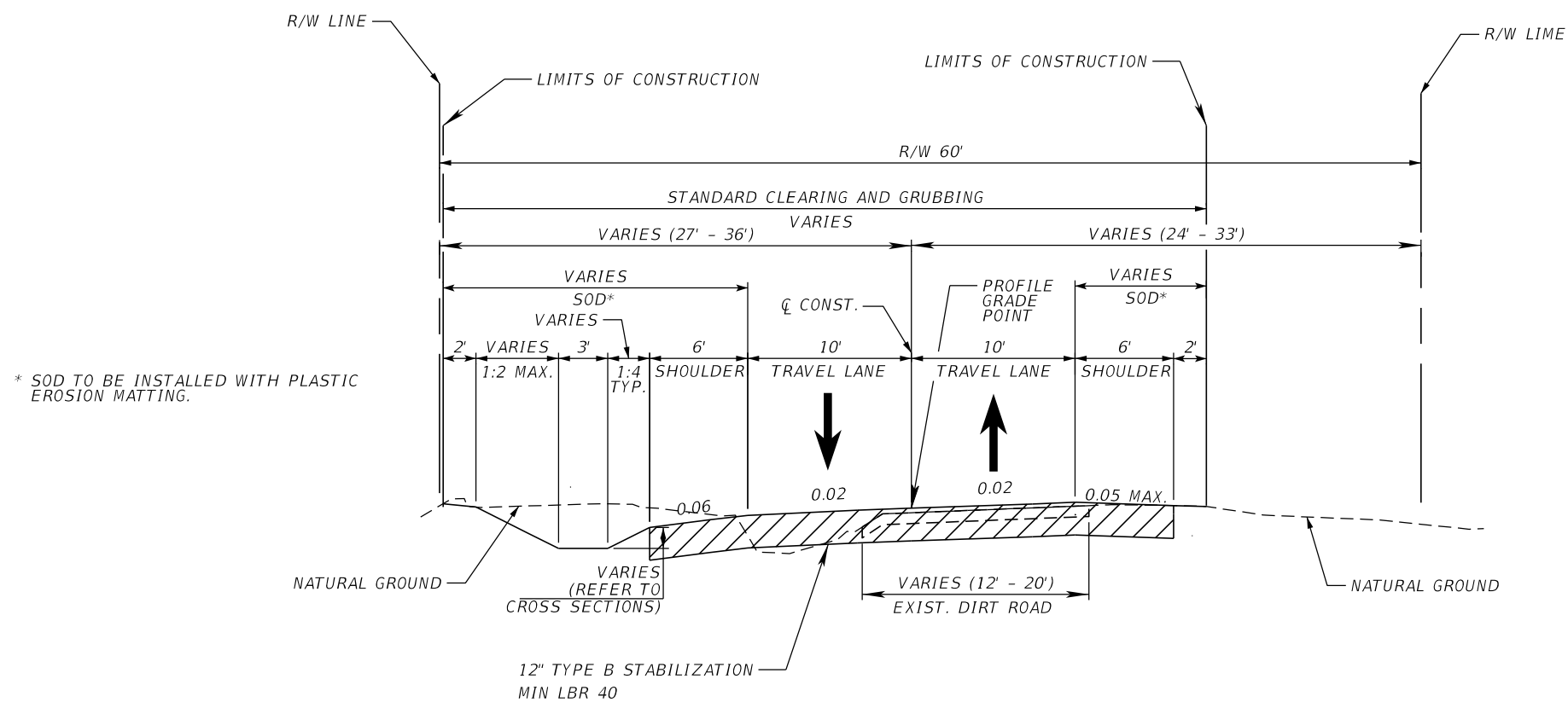
Kimley»Horn
 Certificate Of Authorization No. 696
 Hao T. Chau, P.E.
 P.E. License No. 61640
 189 South Orange Avenue, Suite 1000
 Orlando, Florida 32801



TOWN OF
WINTERMERE

TYPICAL SECTION (01)

SHEET NO.
 3



TYPICAL SECTION

BUTLER STREET & 7TH AVENUE

STA. 102+50.00 TO STA. 108+50.00
 (REFER TO PLAN-PROFILE (03) FOR STA. 108+50.00 TO STA. 109+30.00 - IN INTERSECTION)

N.T.S.

DESIGN SPEED = 20 MPH

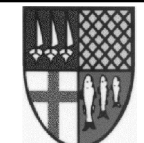
NEW CONSTRUCTION

12" TYPE B STABILIZATION MIN LBR 40

BUTLER STREET & 7TH AVENUE

REVISIONS			
DATE	DESCRIPTION	DATE	DESCRIPTION

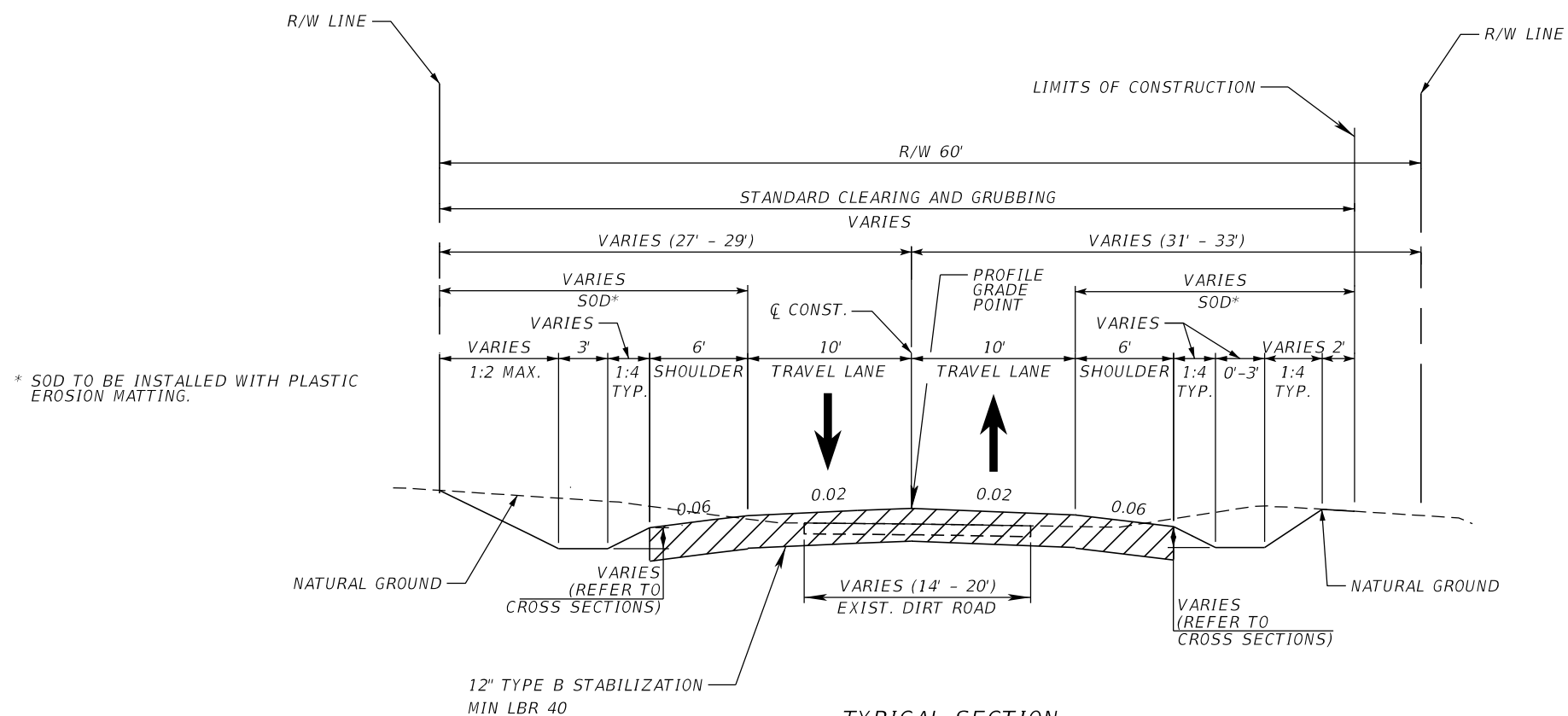
Kimley»Horn
 Certificate Of Authorization No. 696
 Hao T. Chau, P.E.
 P.E. License No. 61640
 189 South Orange Avenue, Suite 1000
 Orlando, Florida 32801



TOWN OF
 WINTERMERE

TYPICAL SECTION (02)

SHEET NO.
 4



TYPICAL SECTION

7TH AVENUE

STA. 109+30.00 TO STA. 112+44.69

N.T.S.

DESIGN SPEED = 20 MPH

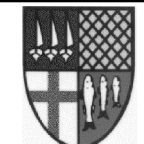
NEW CONSTRUCTION

12" TYPE B STABILIZATION MIN LBR 40

7TH AVENUE

REVISIONS			
DATE	DESCRIPTION	DATE	DESCRIPTION

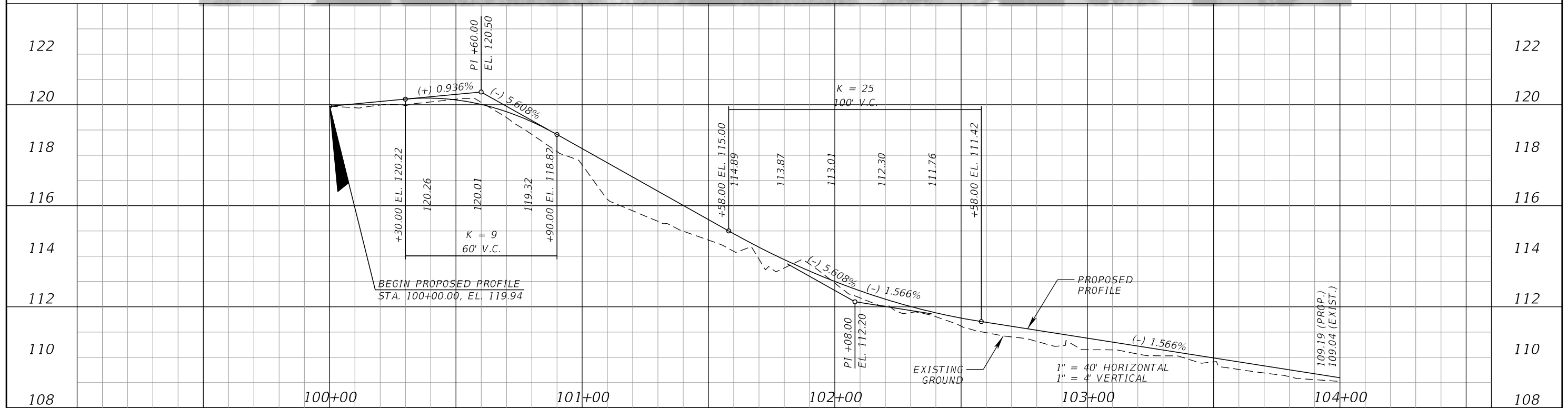
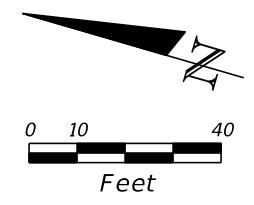
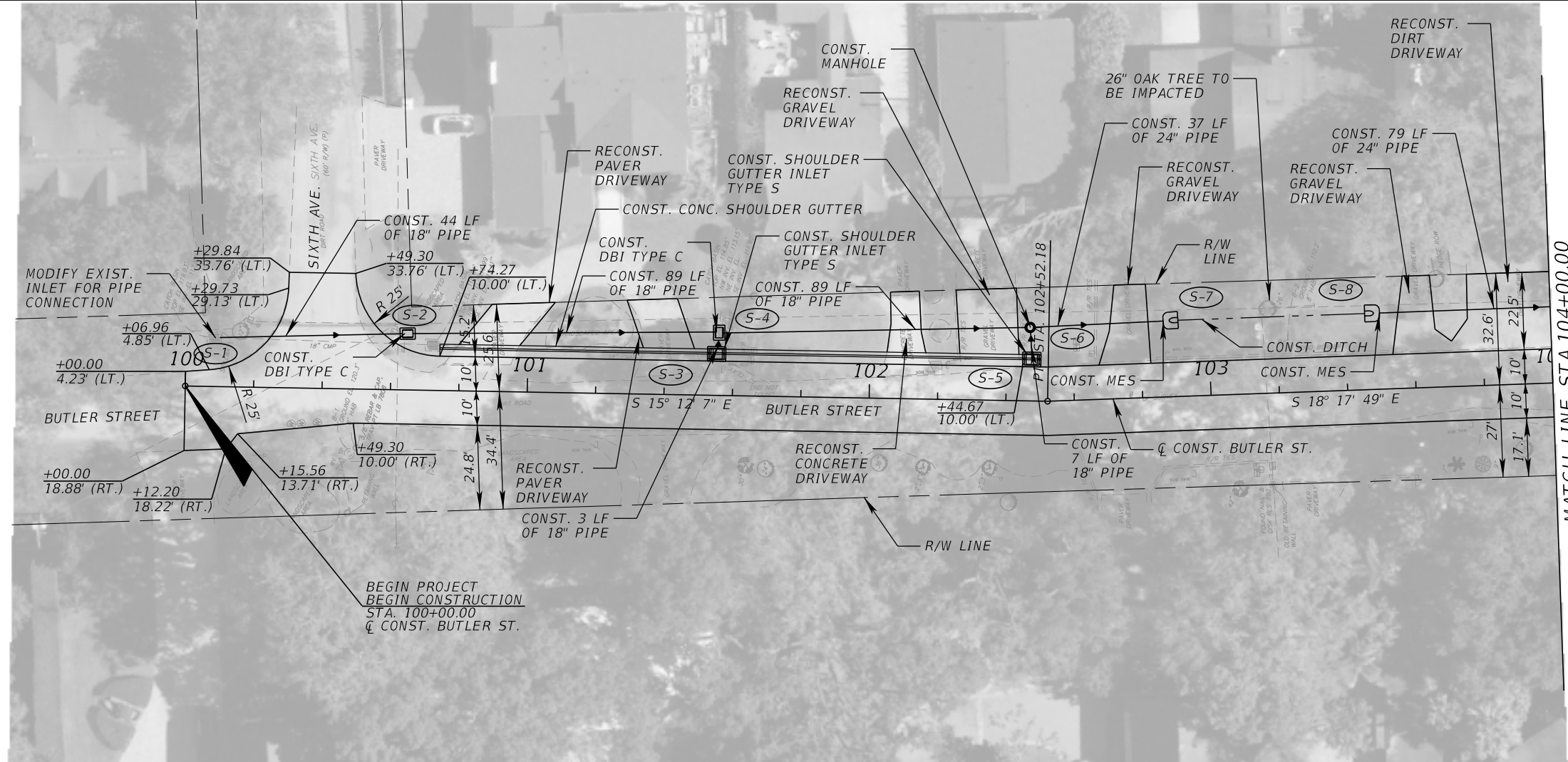
Kimley»Horn
 Certificate Of Authorization No. 696
 Hao T. Chau, P.E.
 P.E. License No. 61640
 189 South Orange Avenue, Suite 1000
 Orlando, Florida 32801



TOWN OF WINTERMERE

TYPICAL SECTION (03)

SHEET NO.
5



REVISIONS			
DATE	DESCRIPTION	DATE	DESCRIPTION

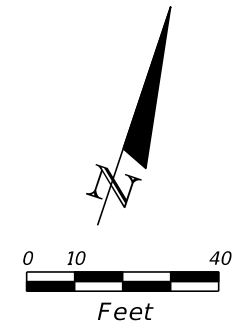
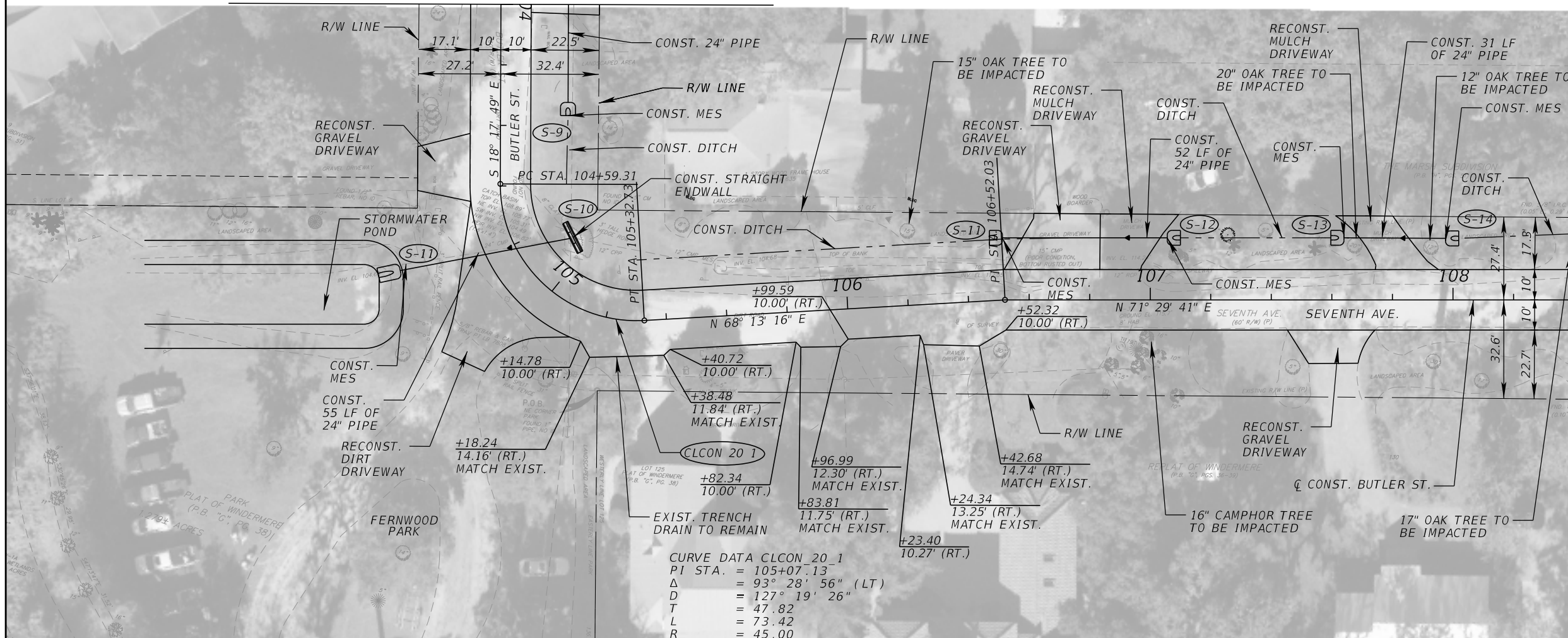
Kimley»Horn
 Certificate of Authorization No. 696
 Hao T. Chau, P.E.
 P.E. License No. 61640
 189 South Orange Avenue, Suite 1000
 Orlando, Florida 32801



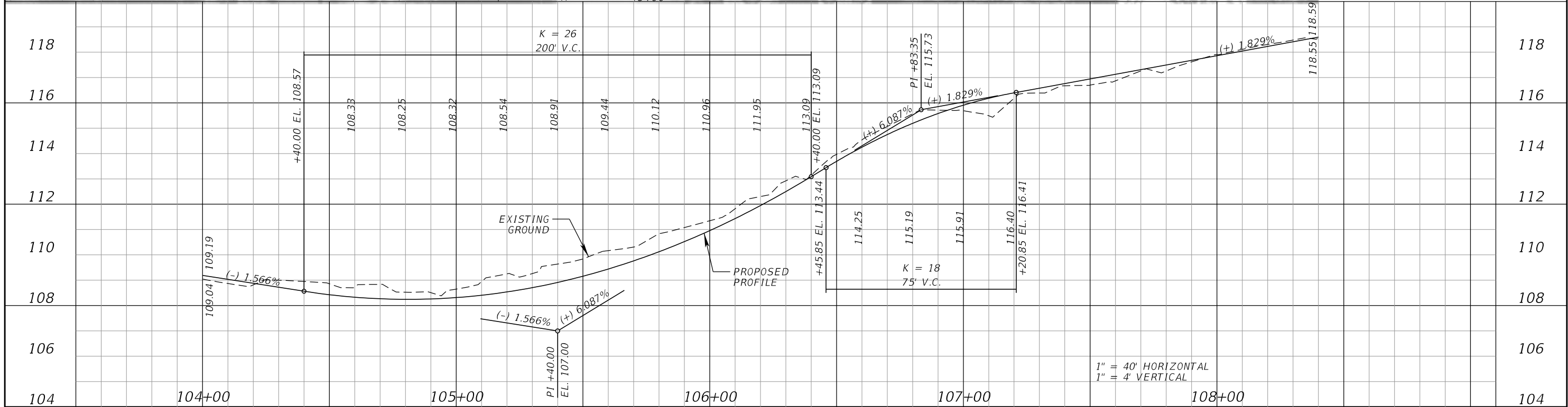
PLAN-PROFILE (01)

SHEET NO. 6

MATCH LINE STA. 104+00.00



MATCH LINE STA. 108+40.00



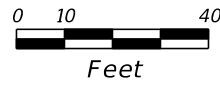
REVISIONS			
DATE	DESCRIPTION	DATE	DESCRIPTION

Kimley»Horn
 Certificate of Authorization No. 696
 Hao T. Chau, P.E.
 P.E. License No. 61640
 189 South Orange Avenue, Suite 1000
 Orlando, Florida 32801

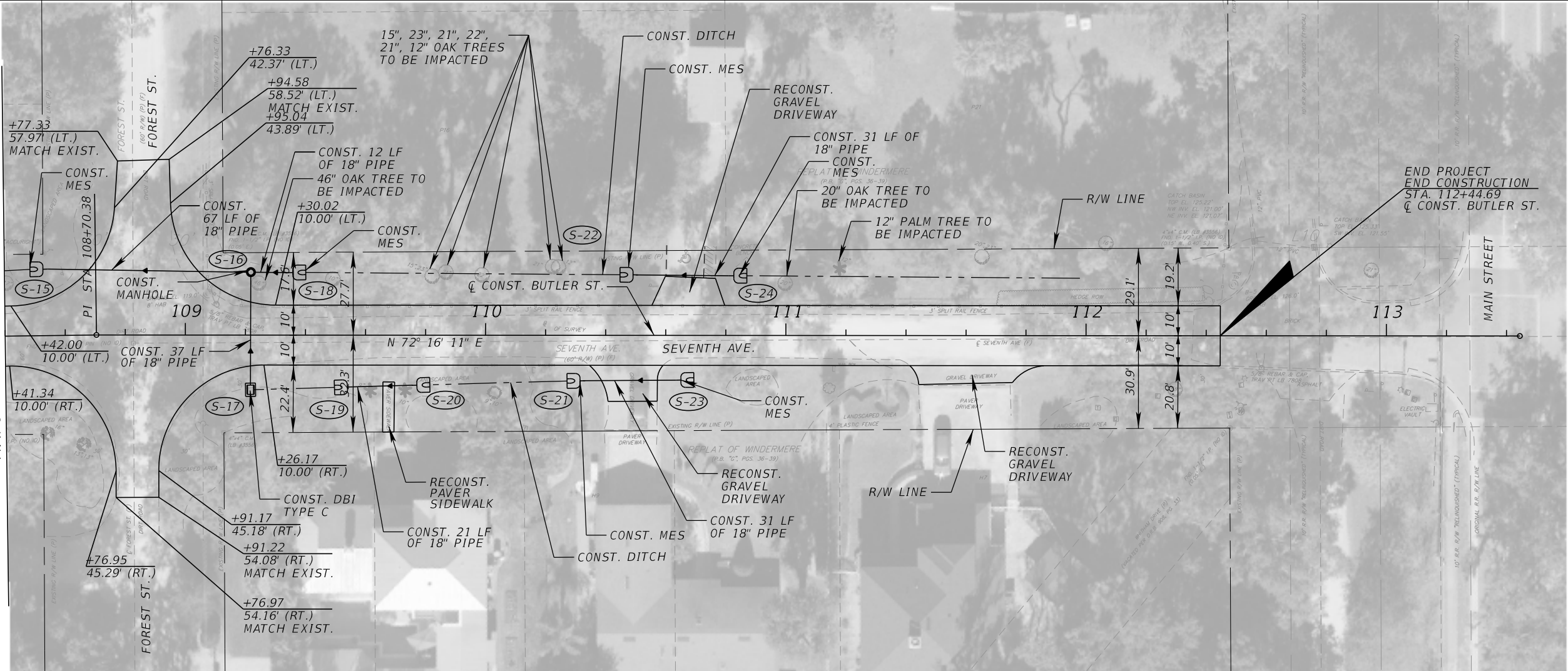
TOWN OF WINDERMERE

PLAN-PROFILE (02)

SHEET NO. 7



MATCH LINE STA. 108+40.00



END PROJECT
END CONSTRUCTION
STA. 112+44.69
@ CONST. BUTLER ST.



1" = 40' HORIZONTAL
1" = 4' VERTICAL

REVISIONS			
DATE	DESCRIPTION	DATE	DESCRIPTION

Kimley»Horn
 Certificate of Authorization No. 696
 Hao T. Chau, P.E.
 P.E. License No. 61640
 189 South Orange Avenue, Suite 1000
 Orlando, Florida 32801



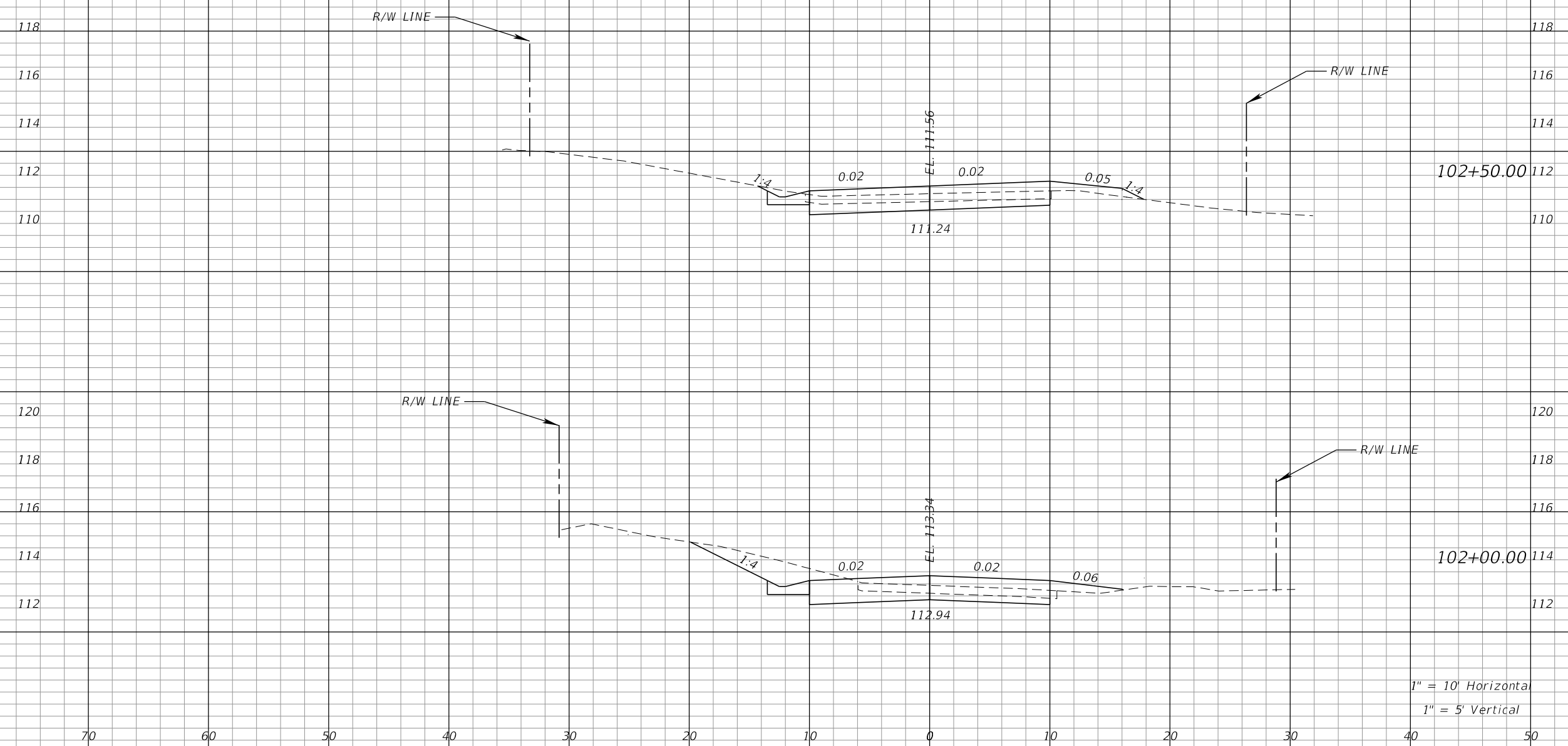
**TOWN OF
WINDERMERE**

PLAN-PROFILE (03)

SHEET NO.
8

Regular		Exc.		Embankment	
A	V	A	V	A	V

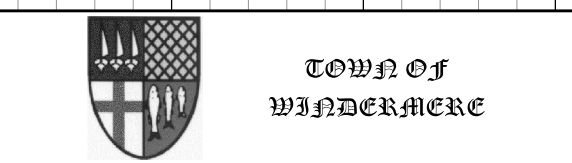
CL CONST. BUTLER STREET



1" = 10' Horizontal
1" = 5' Vertical

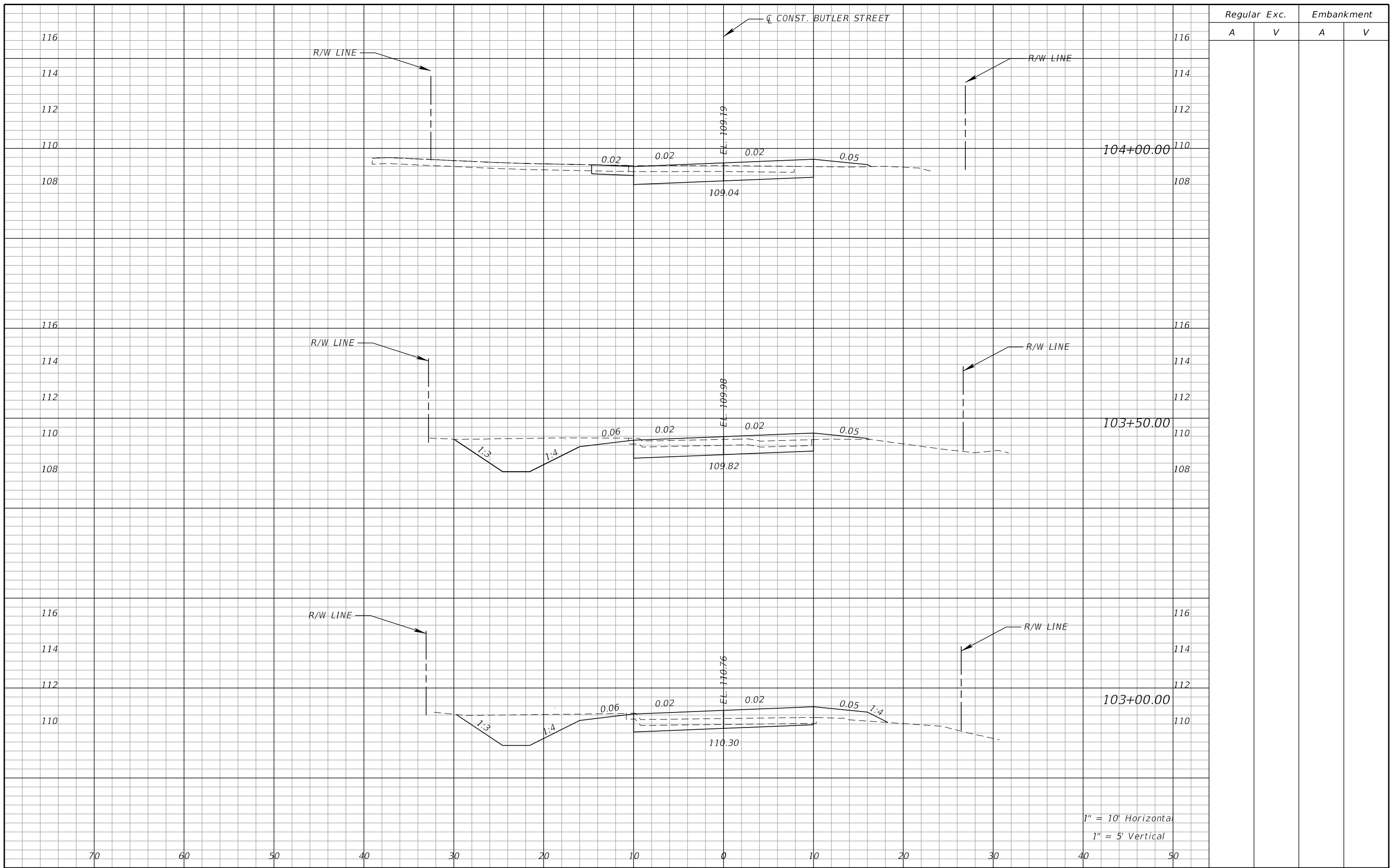
REVISIONS			
DATE	DESCRIPTION	DATE	DESCRIPTION

Kimley»Horn
 Certificate of Authorization No. 696
 Hao T. Chau, P.E.
 P.E. License No. 61640
 189 South Orange Avenue, Suite 1000
 Orlando, Florida 32801



CROSS SECTIONS

SHEET NO.
10



Regular		Exc.		Embankment	
A	V	A	V	A	V

1" = 10' Horizontal
 1" = 5' Vertical

REVISIONS			
DATE	DESCRIPTION	DATE	DESCRIPTION

Kimley»Horn
 Certificate of Authorization No. 696
 Hao T. Chau, P.E.
 P.E. License No. 61640
 189 South Orange Avenue, Suite 1000
 Orlando, Florida 32801

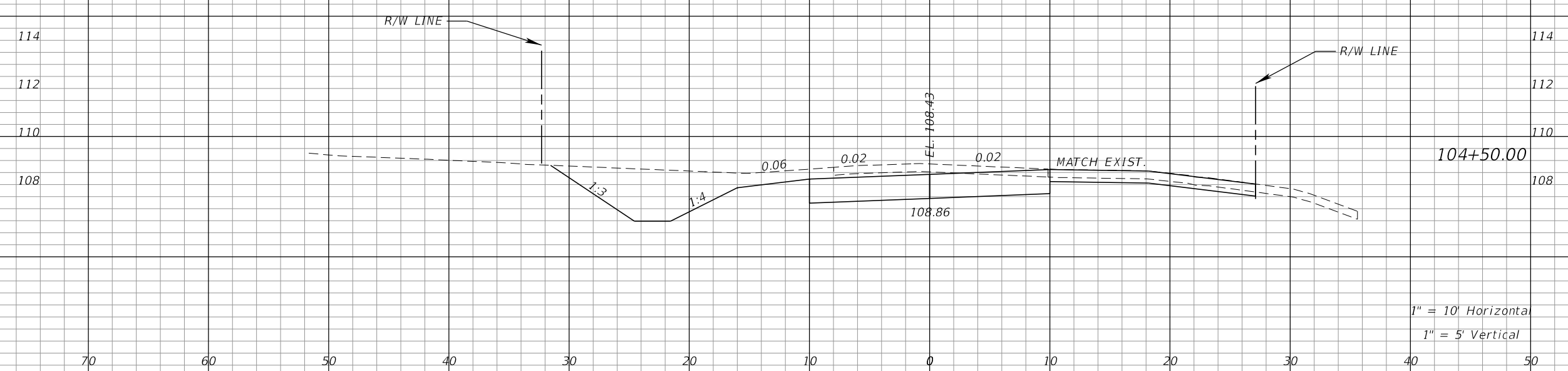


CROSS SECTIONS

SHEET NO.
 11

Regular		Exc.		Embankment	
A	V	A	V	A	V

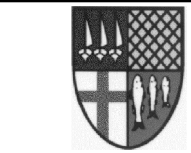
CL CONST. BUTLER STREET



1" = 10' Horizontal
1" = 5' Vertical

REVISIONS			
DATE	DESCRIPTION	DATE	DESCRIPTION

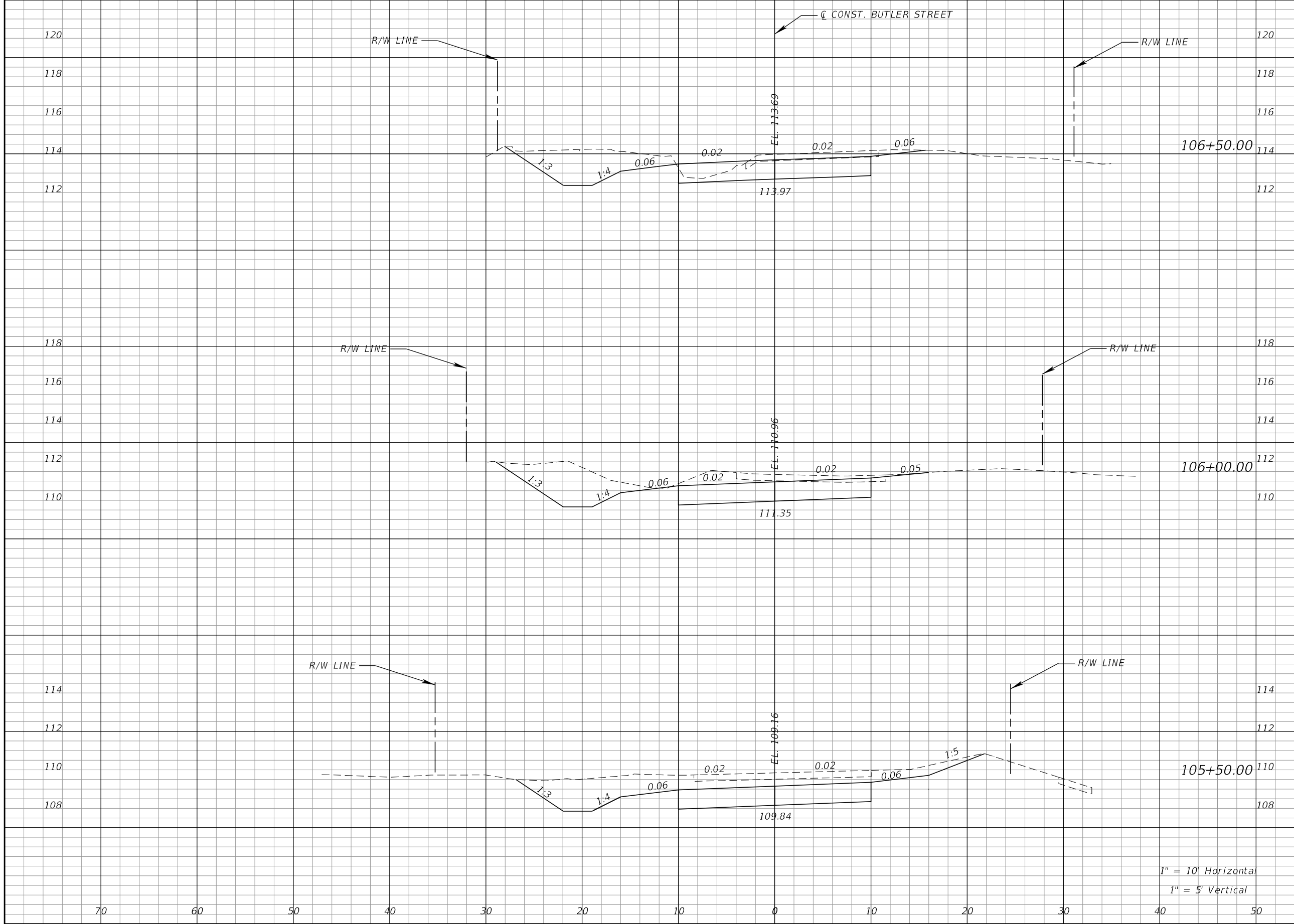
Kimley»Horn
 Certificate of Authorization No. 696
 Hao T. Chau, P.E.
 P.E. License No. 61640
 189 South Orange Avenue, Suite 1000
 Orlando, Florida 32801



TOWN OF
WINDERMERE

CROSS SECTIONS

SHEET NO.
12



Regular		Exc.		Embankment	
A	V	A	V	A	V

1" = 10' Horizontal
1" = 5' Vertical

REVISIONS			
DATE	DESCRIPTION	DATE	DESCRIPTION

Kimley»Horn
 Certificate of Authorization No. 696
 Hao T. Chau, P.E.
 P.E. License No. 61640
 189 South Orange Avenue, Suite 1000
 Orlando, Florida 32801

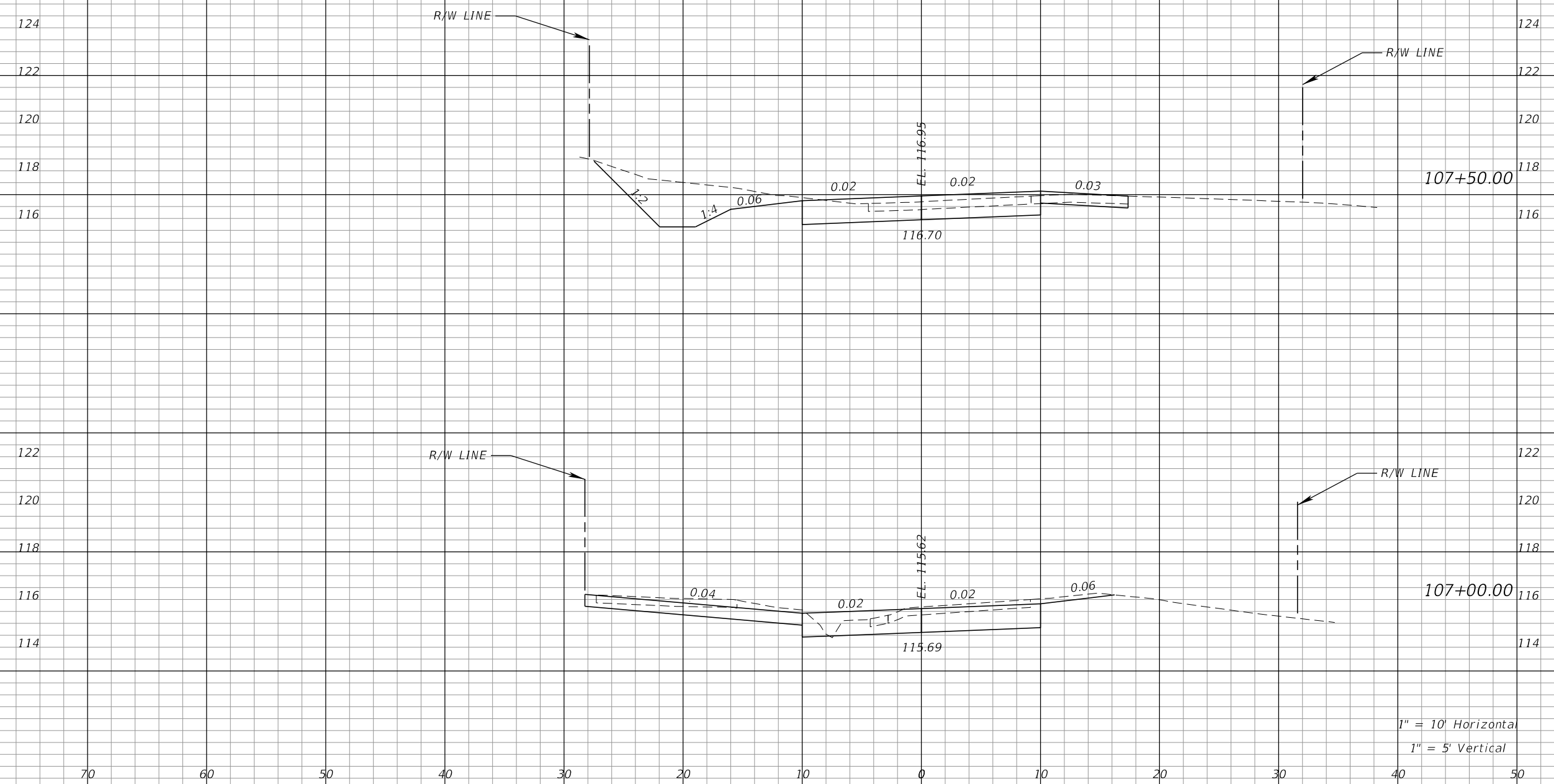


TOWN OF WINDERMERE

CROSS SECTIONS

Regular		Exc.		Embankment	
A	V	A	V	A	V

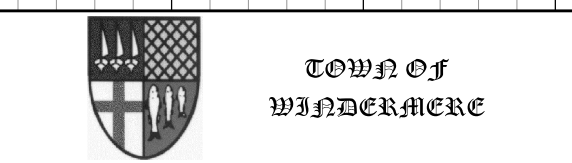
CL CONST. BUTLER STREET



1" = 10' Horizontal
 1" = 5' Vertical

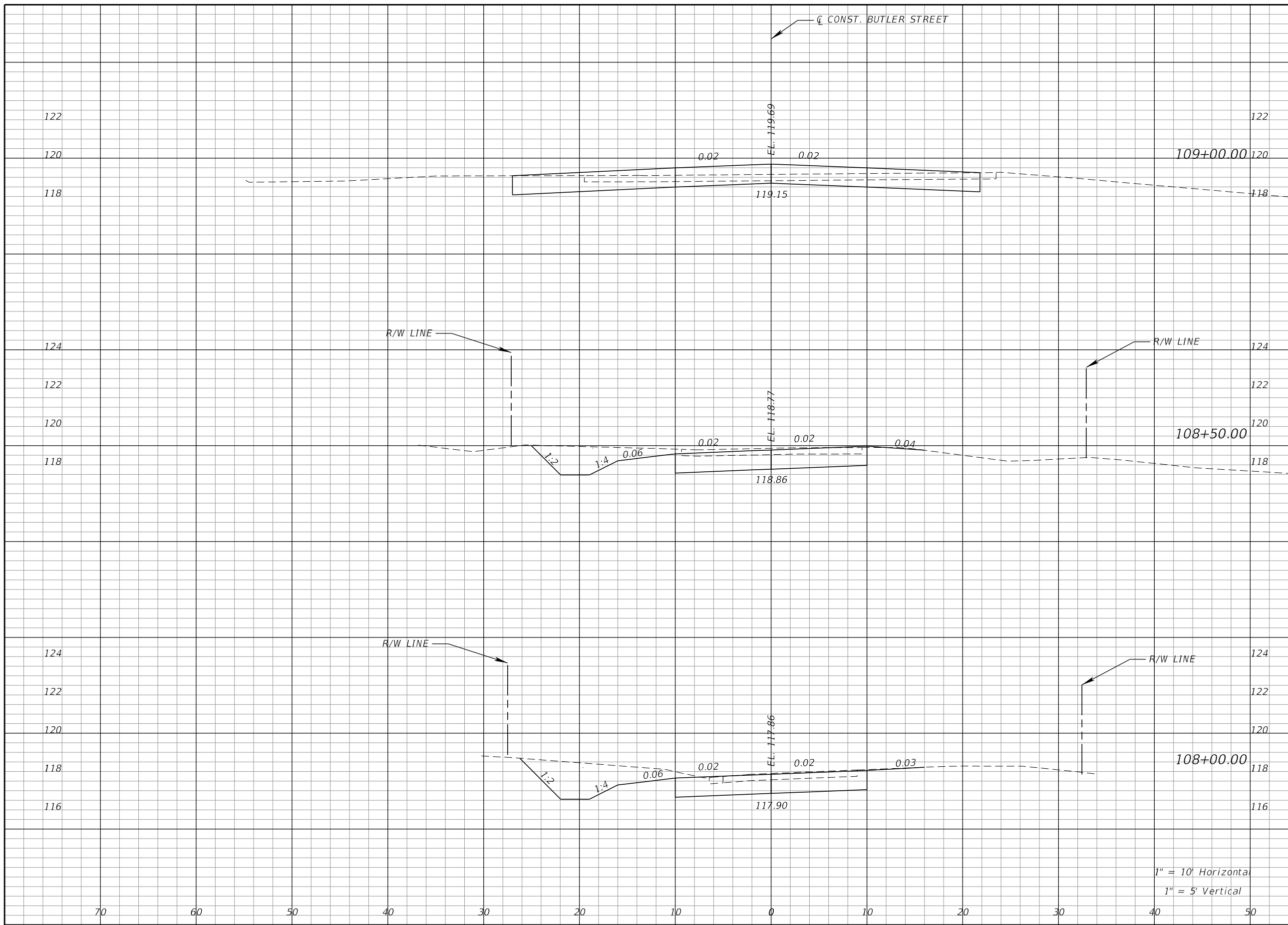
REVISIONS			
DATE	DESCRIPTION	DATE	DESCRIPTION

Kimley»Horn
 Certificate of Authorization No. 696
 Hao T. Chau, P.E.
 P.E. License No. 61640
 189 South Orange Avenue, Suite 1000
 Orlando, Florida 32801



CROSS SECTIONS

SHEET NO.
 14



Regular		Exc.		Embankment	
A	V	A	V	A	V

1" = 10' Horizontal
1" = 5' Vertical

REVISIONS			
DATE	DESCRIPTION	DATE	DESCRIPTION

Kimley»Horn
 Certificate Of Authorization No. 696
 Hao T. Chau, P.E.
 P.E. License No. 61640
 189 South Orange Avenue, Suite 1000
 Orlando, Florida 32801

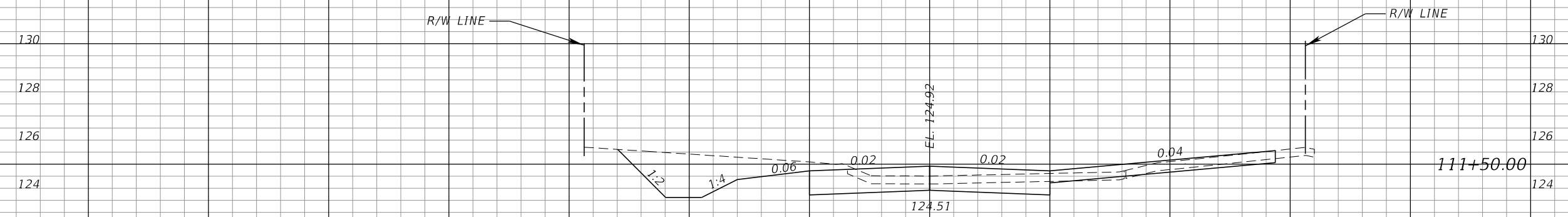


CROSS SECTIONS

SHEET NO.
15

Regular		Exc.		Embankment	
A	V	A	V	A	V

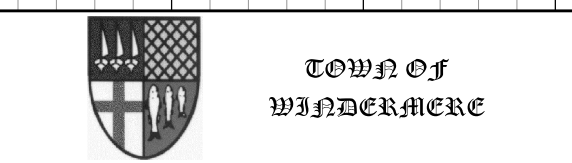
CL CONST. BUTLER STREET



1" = 10' Horizontal
1" = 5' Vertical

REVISIONS			
DATE	DESCRIPTION	DATE	DESCRIPTION

Kimley»Horn
 Certificate of Authorization No. 696
 Hao T. Chau, P.E.
 P.E. License No. 61640
 189 South Orange Avenue, Suite 1000
 Orlando, Florida 32801



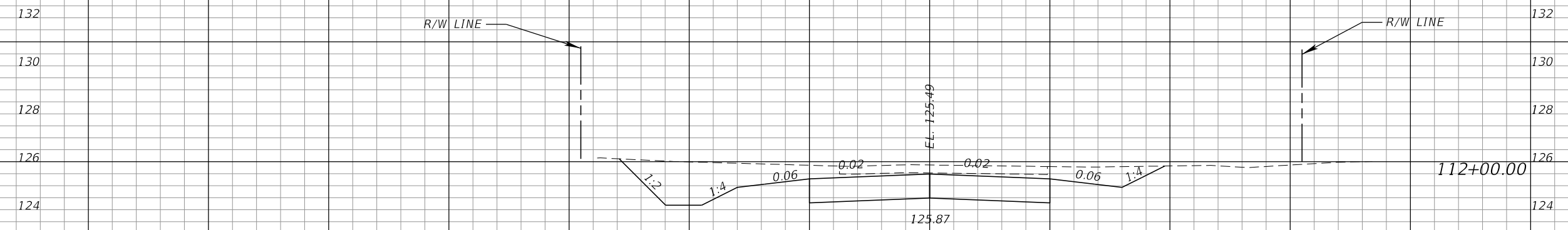
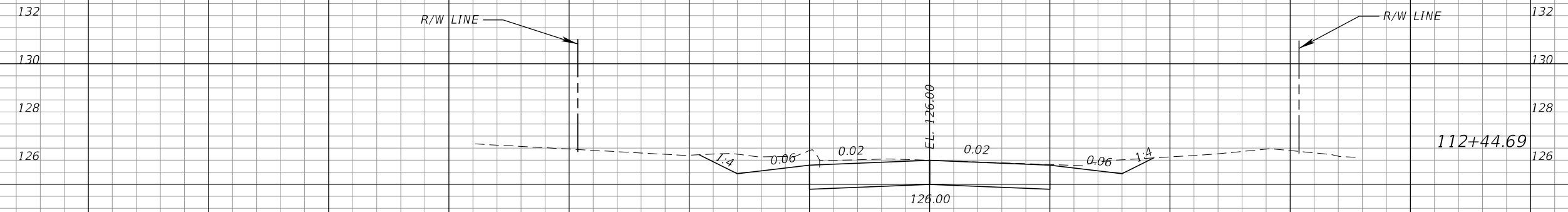
CROSS SECTIONS

SHEET NO.
17

Regular		Exc.		Embankment	
A	V	A	V	A	V

CL CONST. BUTLER STREET

END PROJECT
END CONSTRUCTION
STA. 112+44.69



1" = 10' Horizontal
1" = 5' Vertical

REVISIONS			
DATE	DESCRIPTION	DATE	DESCRIPTION

Kimley»Horn
Certificate of Authorization No. 696
Hao T. Chau, P.E.
P.E. License No. 61640
189 South Orange Avenue, Suite 1000
Orlando, Florida 32801



CROSS SECTIONS

SHEET NO.
18